

# HOLLAND ON SEA



## **DAVID CRIPPS PRESTON**

### **THE MAN WITH A VISION**

HAVING BOUGHT A LARGE AMOUNT OF LAND AT LITTLE HOLLAND IN 1900, DAVID CRIPPS PRESTON SPLIT HIS ACQUISITION INTO FOUR BUILDING ESTATES –

- ❖ THE KINGS CLIFF ESTATE
- ❖ THE QUEENS CLIFF ESTATE
- ❖ THE EMPIRE CLIFF ESTATE
- ❖ THE PRESTON PARK ESTATE



**CLIFF ROAD - 1930's**

A NEAT WHITE PAINTED PICKET FENCE FRONTS THESE RECENTLY BUILT BUNGALOWS, WHILST A ROW OF SAPLINGS CLEARLY IDENTIFIES THE EDGE OF THE PAVEMENT.



**BEACH ROAD, LOOKING EAST FROM YORK ROAD - 1940's**

WITH HOLLAND ON SEA COMING UNDER THE AUSPICES OF CLACTON URBAN DISTRICT COUNCIL IN 1934, HAVING FORMALLY BEEN A PART OF TENDRING RURAL DISTRICT COUNCIL, THE ROAD NAME WAS CHANGED TO CANTERBURY ROAD IN 1953



### **FRINTON ROAD SHOPS - 1930's**

THIS SIDE OF ST. BARTHOLOMEW'S CHURCH IS A SINGLE STORY BAKERS SHOP, ADVERTISING HOVIS ABOVE THE DOOR, AND AN IRONMONGERS DISPLAYS ITS WARES NEXT DOOR.



### **FRINTON ROAD SHOPS - 1970's**

FIRST FLOOR ACCOMMODATION NOW EXISTS ABOVE THE BAKERS, BUT HOVIS IS STILL BEING SOLD THERE. THE RECENTLY BUILT GOLDEN WHEEL MOTEL AWAITS THE SUMMER RUSH.



**“SLEEPY OLD” LITTLE HOLLAND - 1920’s**

THE HORSE AND CART IS JUST TURNING OFF FRINTON ROAD INTO IPSWICH ROAD. THE PROPERTY ON THE RIGHT WAS ON THE CORNER OF KAISER GROVE, LATER SHORTENED TO THE GROVE, AND FOLLOWING THE AMALGAMATION INTO CLACTON BECAME QUEENSWAY. FOR MANY YEARS THE BUILDING WAS PARTLY USED BY THE MIDLAND BANK AS ITS HOLLAND BRANCH.



**LITTLE HOLLAND HALL - 1950’s**

ARTHUR CHRISTIANSEN PURCHASED THE HALL IN 1936. HE BECAME VERY WELL KNOWN, NOT ONLY AS EDITOR OF THE DAILY EXPRESS BUT ALSO FOR APPEARING IN THE FILM “THE DAY THE EARTH CAUGHT FIRE” IN 1961, PLAYING.....  
A NATIONAL NEWSPAPER EDITOR.



**CROSSROADS OF FRINTON ROAD, HOLLAND ROAD,  
KINGS AVENUE AND CORONATION ROAD**

A VERY EARLY PICTURE SHOWING THE OLD TIN CHURCH (ST.  
BARTHOLOMEWS) ON THE LEFT AND LITTLE HOLLAND POST  
OFFICE ON THE RIGHT.



**HOLLAND ON SEA DEVELOPS - 1940's**

LOOKING FROM KINGS AVENUE UP FRINTON ROAD, WITH ORWELL  
DAIRIES, ON THE LEFT, OFFERING REFRESHMENT



### **QUEEN'S CAFÉ - 1934**

LOCAL BUILDER WALTER JOHNSTON BUILT THE QUEENS CAFE IN KINGS AVENUE, OPPOSITE THE KINGSCLIFF HOTEL, IN THE EARLY 1930's AND WENT ON TO EXTEND IT TO BECOME THE QUEENS HALL THEATRE IN 1935.



### **QUEEN'S HALL THEATRE**

#### **SUMMER SEASON VARIETY SHOW - 1935**

HENRY CLAY'S POPS WERE ENGAGED TO PUT ON A SUMMER SEASON VARIETY SHOW IN 1935 AT HOLLAND'S VERY OWN THEATRE.



### **QUEEN'S HALL THEATRE AND CAFE - 1960**

WITH ITS NAME SPELT OUT IN RED NEON OVER THE TOP OF THE BUILDING, AND THE CORPORATE JOHNSTON COLOUR SCHEME OF ORANGE AND CREAM, THE THEATRE, FRONTED BY SHOPS, HAD A WELCOMING FEEL TO IT.



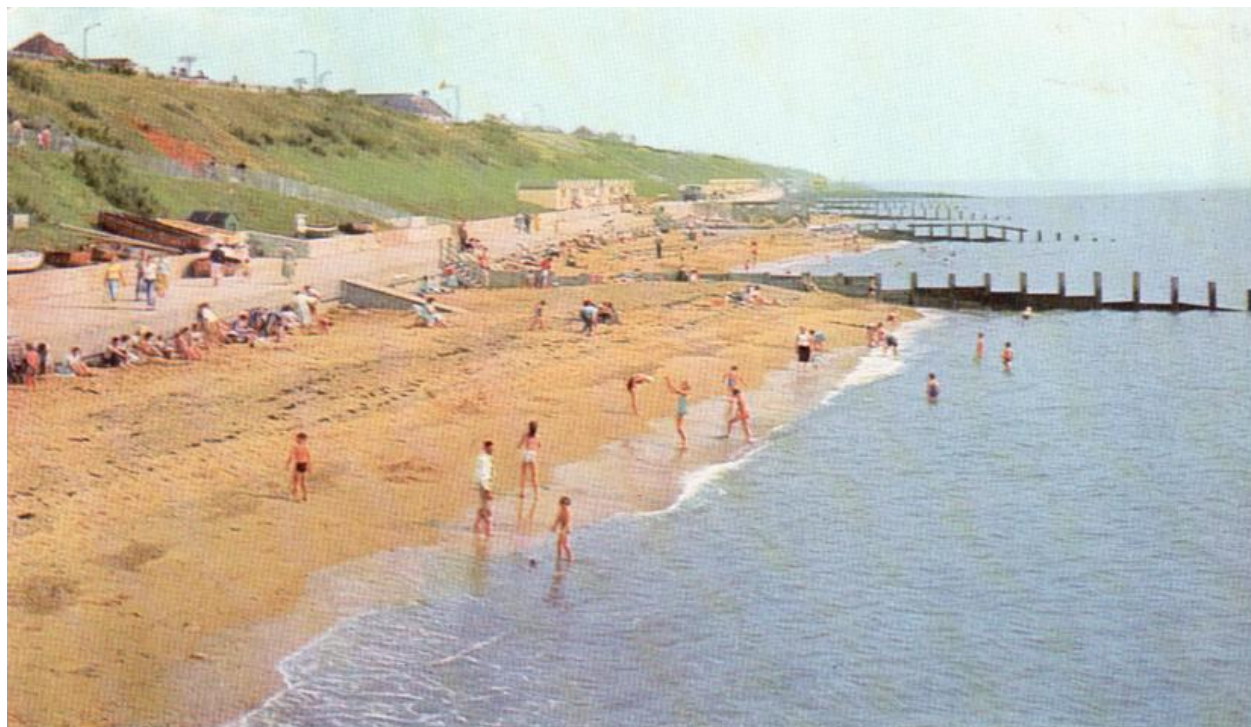
### **QUEENS HALL TEA GARDENS - 1950's**

WHAT COULD BE MORE PLEASANT THAN RELAXING IN THE ATTRACTIVELY MAINTAINED TEA GARDENS ON THE CORNER OF KINGS AVENUE AND KINGS PARADE?  
ONE OF THE MANY ATTRACTIONS OFFERED AT HOLLAND ON SEA DURING THE 1950's



**CLACTON ON SEA SAILING CLUB - 1959**

AMONGST THE DIFFERENT CLASSES OF BOATS IN THE PICTURE ARE SOME THAT REMAINED ON THAT SITE, AND IN THE SAME FAMILY, FOR MANY DECADES.



**EAST OF STAR POINT - 1959**

LOCAL FISHERMEN STORED THEIR BOATS TO THE EAST OF STAR POINT, AND WOULD NOT BE ADVERSE TO GIVING TRIPS AROUND THE SEWER BUOY AT 6d A RIDE. A SMALL RAMP WAS CONSTRUCTED TO ASSIST GETTING THE BOATS ONTO THE VERY AMPLE BEACH.





### **THE CAFE BELOW QUEENSWAY - 1950's**

THIS DELIGHTFUL CAFE ON STILTS DREW LARGE CROWDS DURING THE SUMMER, AND WAS RUN FOR MANY YEARS BY THE PATON FAMILY, WHOSE DAUGHTER PAULINE WAS A FINALIST IN THE MISS ANGLIA CONTEST IN THE EARLY 1960's.



### **BEACH BELOW QUEENSWAY - 1960**

A POPULAR PLACE TO GO TO GET AWAY FROM IT ALL! ON THE LEFT IS THE PADDLE FLOAT AND DECK CHAIR STATION. ALL THE COUNCIL CHANGING HUTS AND PRIVATE BEACH HUTS WERE REQUIRED TO BE PAINTED BUTTERMILK BACK IN THOSE DAYS.



**BENNETS FARM YORK ROAD - 1920's**

THE HOUSE AT THE END, FRAMED BY THE TREES, STILL STANDS AT FRINTON ROAD, AND HAS WITNESSED MANY CHANGES OVER THE YEARS.



**ARCADY, YORK ROAD - 1930's**

THE LOCAL BUILDER WALTER JOHNSTON LIVED AT ARCADY IN YORK ROAD, KNOWN LOCALLY AS BUNNY LANE. THIS GRAND PROPERTY WAS LATER TO BECOME A GUEST HOUSE.



**COLCHESTER ROAD - 1948**

THE PROPERTY ON THE LEFT WITH TWO DORMER WINDOWS WAS TO BE A PRIVATE SCHOOL FOR A NUMBER OF YEARS, RUN BY MRS HATCH.



**COLCHESTER ROAD - 1948**

LOOKING FROM IPSWICH ROAD TOWARDS CORONATION ROAD (LATER TO BECOME WINDERMERE ROAD).



### **PRINCESS HELENA - 1905**

FLEETWOOD CODD WAS JUST ONE OF THE LANDLORDS OF THE PRINCESS HELENA, WHICH WAS SUBSEQUENTLY REPLACED BY THE ROARING DONKEY. IN THE DISTANCE CAN BE SEEN THE LITTLE HOLLAND POST OFFICE ON THE CORNER OF KINGS AVENUE AND FRINTON ROAD.



### **THE BOXING DAY HUNT – ROARING DONKEY 1950's**

A LARGE CROWD TURNS OUT TO WATCH THE HUNT SET OFF, DOWN SLADBURY'S LANE AND ACROSS THE FIELDS ON A FINE BOXING DAY MORNING.



**CORNER OF KINGS AVENUE  
AND MADEIRA ROAD - 1940's**

THE CORNER SHOP DOES A ROARING TRADE IN BUCKETS AND SPADES, BEING OWNED FOR MANY YEARS BY THE REED FAMILY. IT LATER BECAME HAMMONDS BEFORE CLOSING, AND MORE RECENTLY BEING REPLACED BY FOUR BUNGALOWS.



**MADEIRA ROAD - 1940's**

DESPITE EVIDENCE OF TRAFFIC USING THE ROAD IT WAS TO BE A NUMBER OF YEARS BEFORE IT WAS METALLED.



### **KINGS AVENUE - 1920's**

LOOKING TOWARDS FRINTON ROAD, THE SINGLE STOREY SHOP ON THE CORNER OF PRESTON ROAD IS THE POST OFFICE RUN BY N. M. RUTLAND. IT HAD RECENTLY MOVED FROM NEARER THE CORNER OF THE MAIN ROAD.



### **KINGS AVENUE - 1920's**

PRIOR TO THE ROAD BEING MADE UP IN 1928, KINGS AVENUE WAS JUST A TRACK. THE HOUSE ON THE LEFT IS A GENERAL STORE, ON THE CORNER OF DULWICH ROAD, WITH A RESTAURANT KNOWN AS "WEST VIEW" IN THE MAIN BODY OF THE PROPERTY.



### **KINGS AVENUE - 1900's**

LOOKING FROM CORONATION ROAD (NOW WINDERMERE ROAD) ACROSS THE MAIN FRINTON ROAD AND DOWN KINGS AVENUE. THE SINGLE STOREY PROPERTY HALF WAY DOWN IS ON THE CORNER OF BEDFORD ROAD AND IS STILL THERE, BUT NOW BOASTS A FIRST FLOOR.



### **LITTLE HOLLAND POST OFFICE AND GENERAL STORES - 1920's**

THE COTTAGE ON THE LEFT IS ON THE CORNER OF KINGS AVENUE AND FRINTON ROAD AND HOUSED THE FIRST SHOP, ESTABLISHED BY ELLEN HAZLETON. HER SON FRED EXTENDED THE BUSINESS INTO KINGS AVENUE AND BY THE 1950's WAS SELLING TELEVISIONS.



### **SHOPS AT KINGS AVENUE - 1940's**

HOLLAND ON SEA TAKES SHAPE WITH THE POST OFFICE STILL ON THE CORNER OF PRESTON ROAD, BUT NOW IT HAS FIRST FLOOR ACCOMODATION. NEXT DOOR IS EVERITT THE BUTCHERS AND IF YOU TELEPHONED 2X1 or 4Y4 YOU WOULD BE PUT THROUGH TO GRIGGS BUILDERS YARD, NESTLED BETWEEN THE BUTCHERS AND HOLLAND FISH SUPPLIES.



### **KINGS AVENUE SHOPS - 1950's**

PETTIT NOW RUNS THE CORNER SHOP BUT THE POST OFFICE HAS MOVED AGAIN. THE SAPPLINGS LINING THE AVENUE IN THE 1940's HAVE NOW ESTABLISHED THEMSELVES, AND LARGE H AERIALS ARE POINTING TOWARDS LONDON IN ORDER TO RECEIVE RATHER WEAK TELEVISION PICTURES FROM THE BBC.





**KINGS CLIFF ESTATE LITTLE HOLLAND - 1920's**  
ALMOST RANDOMLY PLACED IN WHAT APPEARS A FIELD, LITTLE HOLLAND  
TAKES ROOT.



**KINGS VIEW ESTATE LITTLE HOLLAND - 1920's**  
THE BUILDING OF BUNGALOWS IN MADEIRA ROAD STARTS TO SHAPE THE  
IDENTITY OF LITTLE HOLLAND.



**THE SEAFRONT LOOKING WEST - 1940's**  
ON THE CORNER OF THE GROVE (NOW QUEENSWAY) AND  
KINGS PARADE STANDS THE HIGHCLIFFE HOTEL. IN THE  
DISTANCE IS ITS LARGER RIVAL, THE KINGSCLIFF HOTEL.



**KING'S CLIFF HOTEL - 1950's**  
HOLLAND ON SEA'S PREMIER HOTEL STANDS PROUDLY ON THE CORNER  
OF KINGS PARADE AND KINGS AVENUE. TO THE RIGHT OF THE HOTEL  
CAN BE SEEN THE QUEENS HALL THEATRE, CAFE AND TEA GARDENS,  
WHERE MAPLIN COURT NOW STANDS.



### **ST BARTHOLOMEW'S CHURCH - EARLY 1900's**

COSTING £80 TO BUILD, ST BARTHOLOMEWS CHURCH COULD ACCOMMODATE ABOUT 70 WORSHIPPERS. THIS WAS AT A TIME WHEN THE RESIDENT POPULATION WAS SCARCELY 100. BEING MADE OF CORRUGATED TIN, THE CONGREGATION HAD TO SING VERY LOUDLY TO DROWN THE NOISE OF ANY FALLING RAIN.



### **WESLEYAN METHODIST CHURCH LITTLE HOLLAND - 1920's**

STANDING SOMEWHAT ISOLATED AND SURROUNDED BY A RUSTIC FENCE, THE CHURCH HAS SEEN MANY CHANGES AROUND IT AS HOLLAND ON SEA EVOLVED.



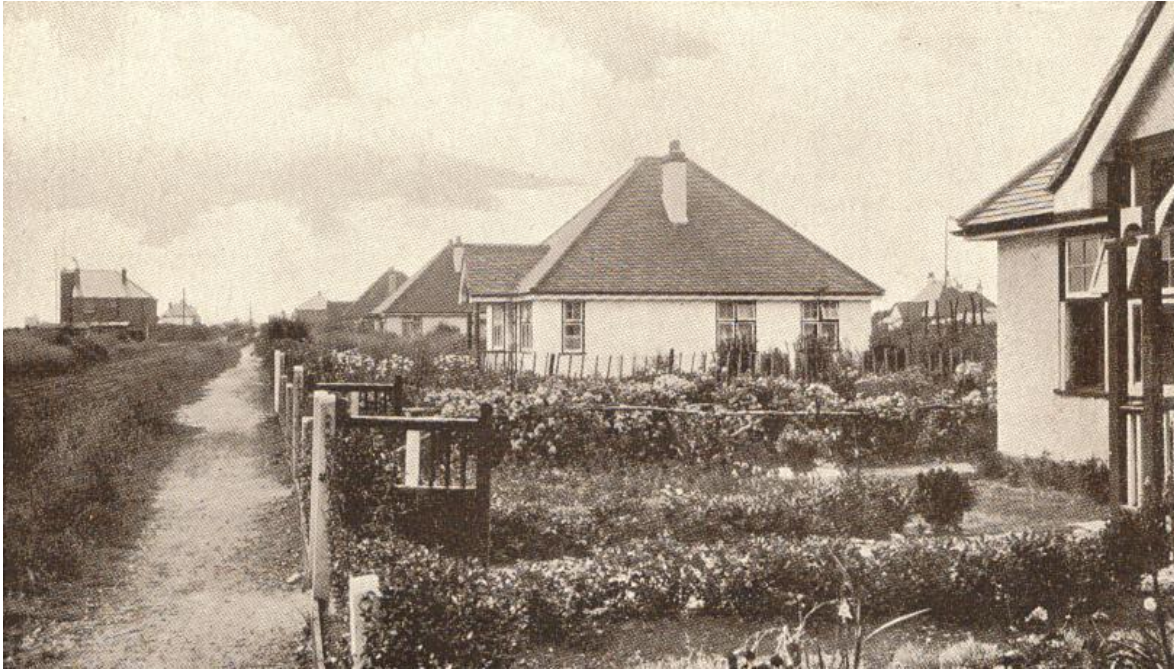
### **THE OAKWOOD - 1950's**

BEFORE IT BECAME LICENSED, THE OAKWOOD WAS A CHARMING TEA ROOM, BUT ITS HISTORY WENT BACK MUCH FURTHER THAN THAT. THIS WAS ORIGINALLY THE FARMHOUSE OF KENTS FARM, AROUND LONG BEFORE DAVID PRESTON REALISED HIS PLAN FOR LITTLE HOLLAND.



### **TURPINS COTTAGE - 1950's**

TURPINS COTTAGE, SITUATED OPPOSITE TURPINS AVENUE, ON THE FRINTON ROAD, WAS ONCE PART OF TURPINS FARM. MUCH AS PEOPLE MIGHT WISH TO BELIEVE IT, THERE IS NO CONNECTION BETWEEN THE HIGHWAYMAN AND HOLLAND ON SEA.



### **DULWICH ROAD - 1920's**

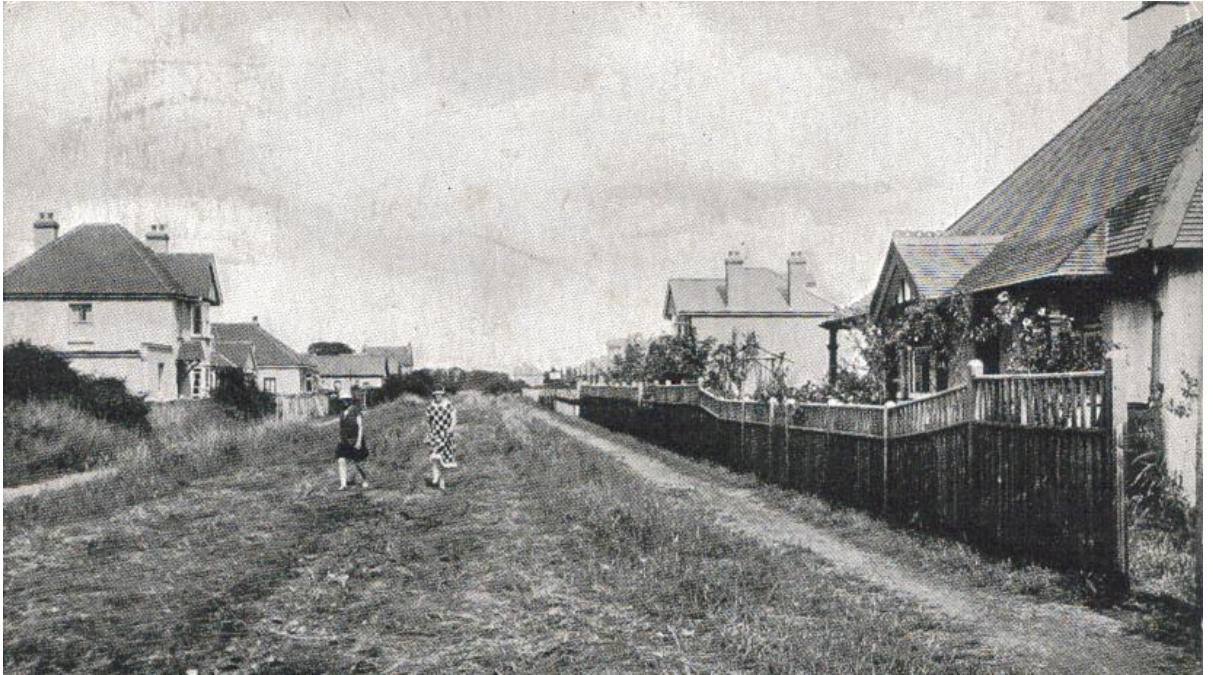
AT THE TIME OF ACQUIRING SIGNIFICANT PARCELS OF LAND AT LITTLE HOLLAND, DAVID CRIPPS PRESTON LIVED IN **DULWICH** VILLAGE, SOUTH EAST LONDON, HENCE THE ROAD NAME.



### **PEACHEYS CAFE AND STORES**

#### **PRIMROSE ROAD - 1930's**

WITH THAT ART DECO STYLE, PEACHEYS MADE A BOLD STATEMENT IN HOLLAND ON SEA. IT LATER BECAME A CLUB BEFORE BEING CONVERTED INTO A CHILDREN'S NURSERY.



**SALISBURY ROAD - 1920's**

CONFIDENT THEY WONT BE BOTHERED BY TRAFFIC, TWO YOUNG GIRLS MAKE THEIR WAY MERRILY DOWN THE CENTRE OF SALISBURY ROAD.



**SALISBURY ROAD LOOKING WEST - 1940's**

LOOKING FROM KINGS AVENUE, THE NEAT AND TIDY PROPERTIES AND THEIR FENCES ARE OVERSHADOWED BY THE UNMADE ROAD AND UNEVEN FOOTPATHS.



**A TYPICAL BEACH SCENE FROM THE 1930's**

THE HUTS ARE PAINTED IN THE JOHNSTON OWNER'S CORPORATE COLOURS OF ORANGE AND CREAM



**THE SEWER PIPE IS LAID - 1930's**

PROTRUDING OUT TO SEA IS A TEMPORARY JETTY WITH A STEAM CRANE, LAYING THE NEW SEWER PIPE JUST WEST OF STAR POINT.



### **THE ARRIVAL OF THE MOTOR CAR - 1959**

HOLLAND ON SEA WITH ITS GOLDEN SANDS, SAFE BATHING, AND WELL-MAINTAINED OPEN SPACES HAS ALWAYS ATTRACTED VISITORS, AND BY THE 1950's THE CAR HAD BECOME AN EASY WAY TO  
*"POP DOWN TO THE COAST"*



### **FRINTON ROAD SHOPS - 1950's**

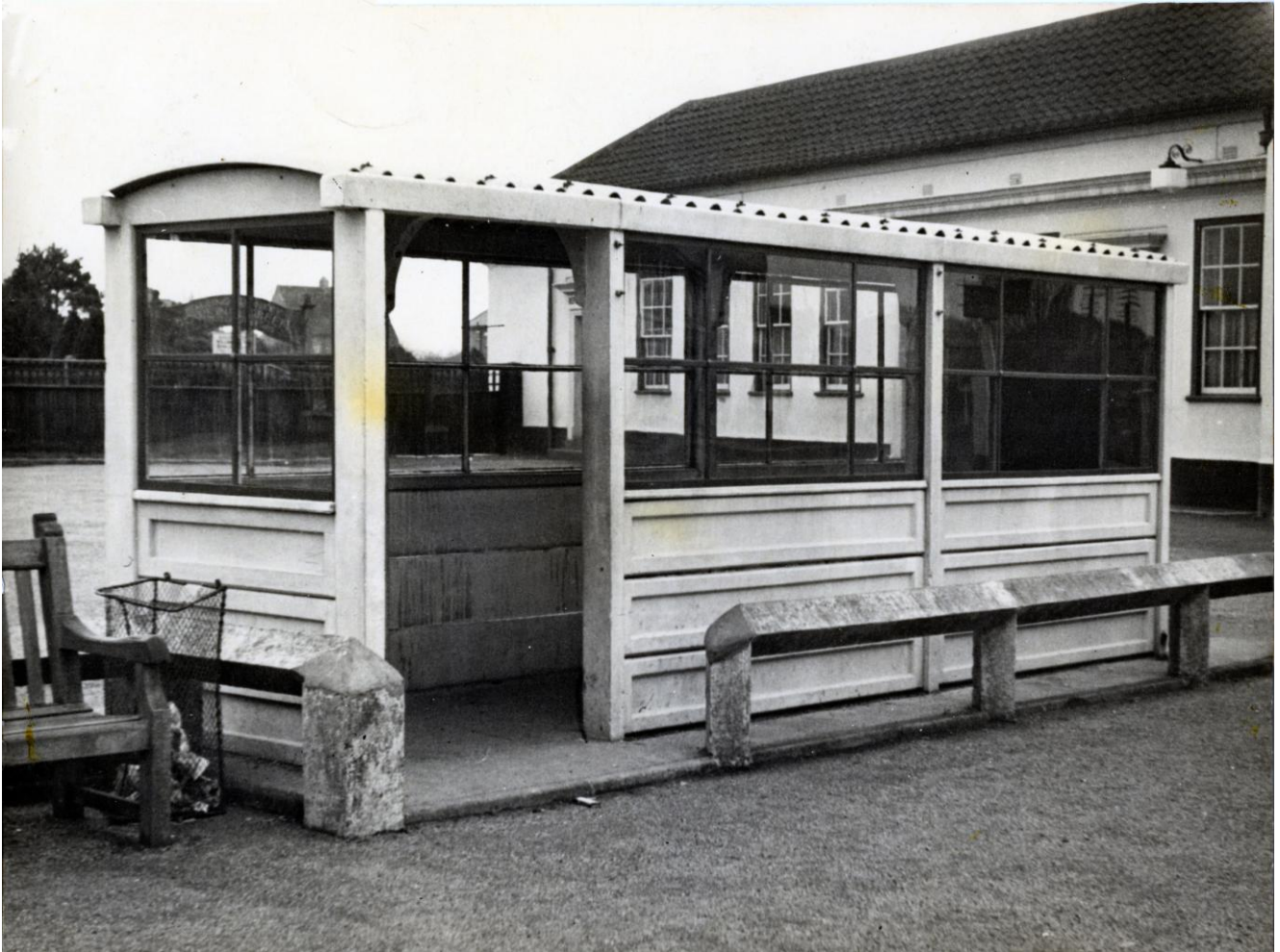
A GROUP OF SHOPS BETWEEN STRATFORD ROAD AND YORK ROAD THAT SERVE THOSE IN THE EAST OF HOLLAND ON SEA. THE WOOL SHOP HAS NOT LONG DISAPPEARED AND THE ART DECO SIGN WAS SAVED FROM THE SKIP, TO BE PRESERVED FOREVER.





### **RECREATION GROUND AND THATCHED PAVILION - 1940's**

THE PUTTING GREEN, SITUATED ON THE CORNER OF YORK ROAD AND KINGS PARADE WAS TO STAY IN OPERATION UNTIL THE 1970's AND WAS SHORTLY TO BE JOINED BY THE YORK ROAD BOWLING CLUB (IN 1949). THE THATCHED PAVILION WAS TO BE THE BOWLS CLUB HEADQUARTERS UNTIL THE END OF THE 1960's WHEN NEW PREMISES WERE BUILT. THE PAVILION WAS THEN USED BY THE GUNFLEET BOATING CLUB IN THE EARLY 1970's, UNTIL THEY MOVED UP TO HOLLAND HAVEN. THE CO-OP BRASS BAND TOOK IT OVER FOR BAND PRACTISE, BUT AFTER A NUMBER OF NOISE COMPLAINTS BY RESIDENTS THE WOODEN BUILDING MYSTERIOUSLY BURNT DOWN



**THE ROARING DONKEY BUS SHELTER - 1959**

WELCOMING PROTECTION WHILST WAITING FOR THE EASTERN NATIONAL BUS  
TO TAKE YOU INTO TOWN,