



**HOLLAND ON SEA**  
RESIDENTS ASSOCIATION

# **The Community MAGAZINE**

**In this issue:**

**Local News  
Village activities  
Future Plans**



<b>IN THIS ISSUE</b>	<b>PAGE</b>
Chairman's Message	3
Updates from Seafront and Open Spaces Officer	4
Surgery Update	7
Highways and Transport	8
Report from County Councillor	9
Beach Cleans	13
Scarecrow Festival	14
Get Cycling	14
Community Garage Sale	15
Annual General Meeting	16
Message from our MP	17
Anglian Community Enterprise - ACE	18
History of Bay Names	20
Holland 129 Club	28
Clacton Choral Society	31
Tendring Specialist Stroke Services	31
Editor's Corner	32
Application form for Garage Sale	32
Membership form	33
Library	36
Easter Message	37
York Road Bowls Club	41
St Bart's Church page	42
Reporting Crime	43
British Legion	43
Girl Guiding	43
Gunfleet Sailing Club	49
Beach Hut Association	55
Tendring Brass Band	59
Public Hall events	60
Essex Theatre Club	60
Index of Advertisers	62
Committee Members	63
Quarterly Meeting	63
Who to contact	63

Whilst every care has been taken to ensure that the data in this publication is accurate, neither the publisher nor its editorial contributors can accept and hereby disclaim, any liability to any party to loss or damage caused by errors or omissions resulting from negligence, accident or any other cause. The Holland Residents' Association, does not officially endorse any advertising material included within this publication

The HRA magazine is collated and edited by ©VerityCoulthard on behalf of the Holland Residents' Association and printed by Dolphin Artwork. Please submit items for the next edition to Verity on 07770 558 771 or email [veritycoulthard@yahoo.co.uk](mailto:veritycoulthard@yahoo.co.uk) .

**Front cover picture courtesy of Rob Woolf Photography - thank you Rob**

## **A message from the Chair of the Holland Residents' Association**



Dear All,

At the time of writing, I am wishing that summer would return as it seems to have decided to avoid us for a while. We are promised a scorcher so hopefully the forecasters are correct and we can enjoy the hot weather on our lovely beaches and with the new easier slope being finished soon.

At the last AGM all existing committee members who wished to remain on the committee were re-elected unopposed. I thank Brenda Bricknell who was our Social Secretary and did so much for us over the past few years and welcome Mo Humphreys who has taken over this role. Wishing you every success Mo.

All the committee contribute a considerable amount of their time to the Association and I hope that the effect of all this work is felt in our community. We are already working on plans for the next Christmas event, yes I know it is only the middle of the year but we start planning the next one the second the first one is finished !!

I was sorry to miss the last AGM and thank Richard Walker, our Vice-Chairman for taking over and conducting the meeting in his usual excellent manner. I also need to thank Richard for chairing two committee meetings when I was either unwell or away on holiday. The feeling of co-operation within the committee is special and I really appreciate each and every one of the committee members and the work they do. A special mention must go to Tony Rulten, our Secretary who does so much work on a daily basis and keeps us all, especially me, in line and is always so much "on the ball" about things. Thank you Tony and also Jill for supporting him and for all the work you put in as Trade and Commerce Officer. Rita Garnett has been doing so much work over the past few years with the surgery issues and a really big thank you must go to her for all her patience and the many hours who has put into helping to get this improved.

Thanks also go to Ray Humphreys who has taken on the role of Minute Secretary and to Andrew Dunnett our Treasurer, David Emmerson who keeps a close eye on planning issues and Jon Tilbury who drives the mini bus and helps with keeping our roads and pathways as clear as possible.

Last but certainly not least thanks must go to Brian Thomasson our President.

May I wish you all a very happy, safe and warm summer

**Verity Coulthard, Chair, Holland Residents' Association**

## CLIFF STABILISATION WORKS:

The end is in sight....Yes, the contractor working on the cliff stabilisation scheme, Jackson, is on the home straight and it won't be long before the lower promenade is open and it will be business as usual.

As this report is being written the beach huts are being returned back to their bases, with half of B section in situ and the others on their way. The C section huts will have a solid concrete platform to sit on, instead of the gravel base previously, and this base, plus the steel pile wall, has allowed for some extra huts to be provided.

Work is proceeding well with the replacement footpath from the top of Kings Avenue, heading west down the cliff to the promenade where once stood the redundant deck chair station, being both wider and more uniform in its gradient. The old footpath was closed many years ago due to cliff movement and severe cracks and its reopening is marvellous.



The disabled access cliff path near Queensway, more affectionately known as the “zig-zag path” is heading towards completion and there will be some planting carried out, particularly at each ‘knuckle’, where the path turns back on itself, so helping to make this quite a seafront feature.

Up on the top it is very fortuitous that the greensward where the “zig-zag path” has been placed widened out, and therefore the area required to fit in such a piece of civil engineering could be accommodated by realigning the top footpath straight across, rather than bulging out towards the sea.



We can now all appreciate the time and thought put into this scheme which had so many variables but, at the end of the day, had only a finite budget. When the top joint footpath/cycle path is relayed, it will be widened slightly, to just over 12 feet (3.7 metres to be exact, but the author is an imperial person) which is the industry standard for shared usage.

Some of the other, quite major but not so obvious, work has been in re-scalping the cliff face behind C section which was very undulated. The surface will now be uniform but will need re-seeding, as will much of the greensward. Well, technology has come up with a very clever wheeze; the areas will be hydro-seeded which translates into being sprayed with a mixture of seed especially developed for a marine environment. This actually settles on the cliff and forms a film of vivid green, thin, matting which will be watered, so germinating the seeds and establishing an attractive and strong root based vegetation.



The contractor aims to be completed by early August so, all being well, when the next edition of the HRA magazine is published, in the Autumn, the beach hut owners in B and C section will be enjoying their marvellous asset, secure in the knowledge that the coast defence project at the front and the cliff stabilisation scheme at the back, secures the perfect base for their 'home by the sea'. Hazlemere Road Car Park will no longer be the work's base and the greensward will once again provide a very attractive swathe of grass between the highway and the byway. It is hoped these quarterly updates in the magazine have proved both useful and interesting to you, the reader, and the HRA would like to thank Tendring District Council for such a wonderful scheme, and to Jackson the contractor for being so considerate to the community, and delivering such a top quality piece of engineering. To the rest of the community there is just one word to say about the completed works....enjoy.

Richard O. Walker

## **Update on move of Frinton Road Surgery to Kennedy Way**

Members of the Frinton Road Patient Group (including myself as Chair) met with the Project Manager for the move on the 5th June. She thanked us for carrying out a survey of how patients travel to the surgery and how they would get to Kennedy Way.

She explained that the project had been allocated a budget of £1.5million subject to certain criteria being met. They had passed several key stages in the project heading towards the final stage which is the core business plan being ratified by NHS England and then ultimately by HM Treasury hopefully in July this year. HM Treasury would have the final say on actually releasing the cash. Currently the Clinical Commissioning Group (CCG) were assessing the tender costs which would be added to the final core business plan. In the meantime, work would start in July and last for about four weeks (underwritten by the CCG) to clear the ground floor in readiness for the new work to start. It was hoped that work on the ground floor would start in September and be finished by Spring next year.

Work would also start shortly on revamping the car park. As this area is owned by NHS Estates and they have not, for a long time, maintained the area, it has been agreed that they will use their contingency maintenance budget to resurface and remark the existing spaces to Essex Council standards. As this money is for maintenance and not a new project they would clear all the growth in the centre of the car park but at this stage they would not be converting it to bays. There will be 60 spaces available for the surgeries plus a further 35 for other ACE use. Originally, the community buses which currently use the car park were to be moved elsewhere. Unfortunately, it has not been possible to re site them so a designated area will be given over to them.

In order to reach the standard required for new projects 18 bicycle racks will need to be installed, drop kerbs will need to be provided and double yellow lines will be painted outside the entrance to the surgery to allow safe access from the car park. Spaces for scooters will also be incorporated.

We were shown a draft plan of the new layout which would include 8 consulting rooms, 4 treatment rooms, group training rooms and a 45 person meeting room on the ground floor as well as keeping the training room upstairs. In order to be compliant with current regulations the usual facilities for infants and disabled will be incorporated. Once the final business plan is agreed the plans will be more widely circulated for discussion. It was pointed out that room for expansion has been earmarked on the plans.

## Travel Survey

At the request of Anglia Community Enterprise (ACE) members of the Frinton Road Surgery Patient Participation Group (PPG) carried out a survey to find out how patients arrived at Frinton Road and how they expected to travel to Kennedy House. The survey was carried out over five days (29th April 2019 - 3rd May 2019). It consisted of a total of 10 sessions, two per day between 9 to 11 in the morning and 3 to 5 in the afternoon. Results are shown as a separate file.

Overall some 556 patients were interviewed this is roughly 10% of the current surgery list. The categories were: Car (including lifts), Walk, Bus, Cycle, Taxi and other. Originally mobility scooters were not included in the list of categories but proved to be of a significant number to warrant their specific inclusion. One problem that was brought to our attention by a number of scooter users was the lack of dropped kerbs in Valley Road which necessitated long detours to get to Kennedy Way.

Currently 36% of patients interviewed walked to Frinton Road. Only 16% expect to walk to Kennedy House. A large proportion of those who walked were now expecting to need a taxi or a bus. Those who said they needed a bus were aware that the current bus route doesn't serve Kennedy Way and were unsure how they would get from Holland Road (where the bus currently stops) to Kennedy Way. The question of bus users is a difficult one because the daily numbers involved are unlikely to justify the current bus company (First Buses) diverting to cover this route. Indeed, unless all of the buses were diverted up Valley Road the service would be, at best, only half hourly (if they turn up on time) which could cause problems with missed appointments / late arrivals. The only solution to this problem would appear to be some sort of shuttle bus from Holland on Sea to Kennedy House.

A large proportion of the car users didn't know there was a car park at Kennedy Way. When the car park is refurbished signage will be required. Also the disabled bays will need to be near the entrance to the actual surgery. Similarly a space to park scooters needs to be provided near the entrance.

We were not asked to record the reasons for visits but our observations were that a significant proportion of patients came in only to deposit prescriptions in the box provided (or to pick up prescriptions from reception). A number of patients asked what plans were in place to deliver repeat prescriptions once Frinton Road closes. Our view is that some form of arrangement with the local pharmacies (or others) should be considered. This would significantly reduce the need for patients to travel to Kennedy Way.

**Rita Garnett Chair - Frinton Road PPG**

## Report of the Essex County Councillor – Clacton East Division

*I come not from Heaven but from Essex – William Morris (1888)*



Special thanks to the **Holland Residents' Association** for once again giving me the opportunity to update readers on my work and activities on behalf of the local residents of Holland on Sea, East Clacton & Gt. Clacton



### Holland on Sea 'Eyes and Ears'

As of 17th June

Thank you to all the local residents who have contacted me (by email or over the phone) with reports of issues that need resolving. These are very much appreciated. Please keep them coming.

### Holland Library

The campaign team of the Holland Community Association, Holland Residents' Association and I met Cllr. Susan Barker, the Cabinet Member for Libraries, at County Hall, Chelmsford. She informed the delegation that "unless the community volunteered to manage and run Holland Library it would close in the autumn."

Whether our community has the capacity, the competence, or even the will to take on the responsibility and duties of operating the library is debatable. It appears the community would need to find the accommodation costs (room lease, gas, electric, etc.) of £11,000+ each year. Where will this money suddenly materialise from???

The campaign agreed to submit an Expression of Interest (required by ECC by the closing date of 18<sup>th</sup> June) thus keeping the Library open for the time being. In the meantime 'Save our Libraries Essex' (SOLE) has engaged a specialist solicitor ready to mount a legal challenge to ECC's proposal to close the 25 libraries (including Holland) and possibly a further 19. SOLE is looking to, as part of the legal challenge, take up the case of any one person, for every threatened Library in Essex, who would particularly suffer if the Library were to close, due to having disabilities or being on benefits etc. I am told this approach is called a "straw person". Legal Aid will then be secured.

Please email your thoughts on ECC's stance to:

[cldr.david.finch@essex.gov.uk](mailto:cldr.david.finch@essex.gov.uk) and

[cldr.susan.barker@essex.gov.uk](mailto:cldr.susan.barker@essex.gov.uk)

both at County Hall, Chelmsford, Essex,  
CM1

Facts:

It costs ECC just £690 a week to run Holland Library. It is in excess of 2.1 miles walking distance from Holland Library to the nearest other library (Clacton). Despite being open only 16 hours per week it 'loaned' 16,000 books in 2018/19.

Some of the campaigners with the  
'Holland Loves our Library' card



### **Buses 97 and 98**

First Bus has revised bus stops served in Clacton. The Walton bound 97/98 now uses the Pier Avenue Stand C stop; and the Colchester bound 97/98 now uses the Jackson Rd Stand E stop. (This decision was taken to eliminate the confusion of both services using the same stop in Pier Avenue).

### **School Crossing Patrol, 20s Plenty**

On 25<sup>th</sup> February, resident Alan Webb and I commenced the voluntary daily School Crossing Patrol duties at Frinton Road – enabling youngsters attending Holland Haven School to cross the busy road safely. As a result there has been a noticeable increase in people walking, scooting or cycling to the local school instead of using the car.



Young children are gaining independence. Everyone is so polite and courteous. Drivers are very helpful and the residents of Aylesbury Drive, where parents drop off and collect, are so supportive to the cause.



At the Highways Surgery on 30th April the Deputy Leader of ECC confirmed to me that the numbers crossing at the volunteer School Crossing Patrol were more than sufficient to justify ECC fully funding a permanent SCP. The recruitment of SCP staff will commence shortly.

**PLEASE MAKE FULL USE OF THE SCHOOL CROSSING PATROL  
AND DO NOT GIVE ECC ANY EXCUSE TO REMOVE THE FUNDING (AGAIN) IN THE FUTURE.**

### **Hedingham 134 - the Seafront Circular - exciting news**

I promised to keep you posted regarding my discussions with **Hedingham Buses**. I am very pleased to report that as a result the forthcoming service enhancements have been secured:

1. Mondays to Fridays operating 0900-1430 (i.e. now including a new lunchtime service) every 30 mins.
2. Saturdays operating 0900-1300 (i.e. a new Saturday service) every 30 minutes.
3. These services will be extended to circa 1730 during the school summer holidays.
4. During the summer months the service will operate an Open Top Bus enabling passengers to enjoy the wonderful views of our Sunshine Coast.
5. **Hedingham** confirms its continued support of the HRA's Christmas event (Saturday 14<sup>th</sup> December).



**Please support Hedingham Buses' investment in our village and town by using the 134 bus service to our local shops & cafes.**



## Holland-on-Sea to Clacton seafront circular 134

**Mondays to Fridays (except Bank Holidays)**

**NEW Lunchtime service**

Holland-on-Sea, Viking Way	0900	0930	1000	1030	1100	1130	1200	1230	1300	1330	1400
Holland-on-Sea, Roaring Donkey	0904	0934	1004	1034	1104	1134	1204	1234	1304	1334	1404
Clacton, Rail Station	0910	0940	1010	1040	1110	1140	1210	1240	1310	1340	1410
Clacton, Pier Avenue	0915	0945	1015	1045	1115	1145	1215	1245	1315	1345	1415
Clacton, Pier	0920	0950	1020	1050	1120	1150	1220	1250	1320	1350	1420
Holland-on-Sea, Viking Way	0930	1000	1030	1100	1130	1200	1230	1300	1330	1400	1430

**NEW School Summer Holidays Weekday Afternoons**

**25th July to 2nd September inclusive**

	Hol	Hol	Hol	Hol	Hol	Hol	Hol				
Holland-on-Sea, Viking Way	1430	1500	1530	1600	1630	1700	1730	<b>New weekday timetable with effect from Thur. 25<sup>th</sup> July</b>			
Holland-on-Sea, Roaring Donkey	1434	1504	1534	1604	1634	1704	1734				
Clacton, Rail Station	1440	1510	1540	1610	1640	1710	1740				
Clacton, Pier Avenue	1445	1515	1545	1615	1645	1715	1745				
Clacton, Pier	1450	1520	1550	1620	1650	1720	x				
Holland-on-Sea, Viking Way	1500	1530	1600	1630	1700	1730	x				

			<b>Saturdays !!!</b>									
			<b>NEW service</b>									
Holland-on-Sea, Viking Way	o900	o930	1000	1030	1100	1130	1200	1230	1300			
Holland-on-Sea, Roaring Donkey	o904	o934	1004	1034	1104	1134	1204	1234	1304			
Clacton, Rail Station	o910	o940	1010	1040	1110	1140	1210	1240	1310			
Clacton, Pier Avenue	o915	o945	1015	1045	1115	1145	1215	1245	1313			
Clacton, Pier	o920	o950	1020	1050	1120	1150	1220	1250	x			
Holland-on-Sea, Viking Way	o930	1000	1030	1100	1130	1200	1230	1300	x			
			<b>NEW six Summer Saturday Afternoons - 27th July to 31st August</b>									
			Summer	Summer	Summer	Summer	Summer	Summer	Summer	Summer	Summer	Summer
Holland-on-Sea, Viking Way	x	1330	1400	1430	1500	1530	1600	1630	1700	1730		
Holland-on-Sea, Roaring Donkey	x	1334	1404	1434	1504	1534	1604	1634	1704	1734		
Clacton, Rail Station	x	1340	1410	1440	1510	1540	1610	1640	1710	1740		
Clacton, Pier Avenue	1315	1345	1415	1445	1515	1545	1615	1645	1715	1745		
Clacton, Pier	1320	1350	1420	1450	1520	1550	1620	1650	1720	x		
Holland-on-Sea, Viking Way	1330	1400	1430	1500	1530	1600	1630	1700	1730	x		
<b>Hol</b> - Operates in school summer holidays during July (from 25th), August and until September (2nd) inclusive.												
<b>Summer</b> - Operates on six Saturdays from last Saturday in July (27th) to last Saturday in August (31st).												

### Sea Lane, Essex Public Right of Way – encroachment

This public footpath runs from Holland Road (virtually opposite Sladburys Lane) to the North Sea at Marine Parade East and is well used by our community. It forms a wonderful half mile long wildlife corridor – providing a habitat for numerous species, some (such as hedgehogs) declining in numbers throughout the country.

As previously mentioned, unfortunately, on 15th February, I was informed by one of the HRA's 'eyes and ears' that a stretch of public land immediately adjacent to the Public Right of Way at Howard Road was being cleared and fencing posts were being put in. Grateful for this report, I immediately contacted the PROW team at County Hall and Sarah that afternoon attended and instructed the contractor to cease work. Despite this, three days later the post and fence erection continued.

The PROW team informed me that only the six foot width of the path belongs to ECC. A Land Registry search confirms that ownership of the land covered by brambles and thicket is unregistered. The PROW team contacted the TDC Planning Enforcement team, who then investigated the encroachment.

I am told the Planning Department contacted the person and instructed them to submit a planning application for 'change of use'. I understand this has not been complied with. A Harm Assessment was carried out and with regard to planning and enforcement a decision to take no further action was made. In my opinion this is flawed as this was a spatial planning exercise with no consideration taken into account of the damage to this unique wildlife corridor; or community safety – with the new threat of graffiti and, heaven forbid, replication alongside the full length of the footpath.

People have found a loophole and a gap between the workings of the two councils. I have escalated the issue to the Chief Executive of Essex County Council and the Chief Executive of Tendring District Council. I have contacted Essex Wildlife Trust (of which I am a member) and the Open Spaces Society for advice and support.

An officer said "Whilst we can 'invite' an application for retrospective change of use, we cannot actually force the householder to do so. However, if the criteria is met, we are able to take subsequent enforcement action if an application is not forthcoming. If the criteria has not been met (as in this case), and the likelihood is that an application would have been granted anyway, then the view may be taken that it is not in the public interest to utilise officer time in pursuing the householder."

#### **Health Policy, Overview & Scrutiny Committee**

You will remember in the previous editions of this magazine, at quarterly meetings and elsewhere, I have raised the new modern primary care facility coming to Kennedy Way provided by NHS England when surgeries combine (2020). 21<sup>st</sup> Century facilities at last. The pan-Essex HPOS Committee, of which I am Vice Chair, on 12<sup>th</sup> June at County Hall challenged the Clinical Commissioning Group (CCG) representative with questions regarding transport and prescription ordering for the new set up. It is critical that systems are in place for: door 2 door transport between HoS and the Kennedy Way facility; and to save Holland residents having to travel to Kennedy Way just to put a prescription slip in a black box on the wall for the GP to authorise. There clearly needs to be sensible and workable solutions developed. Watch this space!

#### **Frinton/Holland Road resurfacing (sic)**

What an appalling job this was. The road is worse now than when the contractors started. And it cost £55,000...

Dumping loose chippings (and let's be frank, that's what it was) near schools and shops caused stone chips to be thrown up from tyres catching pedestrians especially those young children in pushchairs that are very close to the ground. This also caused chips to vehicles' bodywork. Pedestrians had to put up with clouds of dust being inhaled which is harmful for Asthma sufferers. Road markings were even painted on loose chippings. The aftermath is umpteen potholes, lengthy cracks and a 'shale mountain' opposite the Co-op.

I have taken this up at County Hall in an ECC Highways Surgery (30<sup>th</sup> April) and full Council

(14<sup>th</sup> May). The response I received on 7<sup>th</sup> May was the following:

**Cllr Sargeant**, "Further to our conversation yesterday and thanks for the photos. An inspection of both Holland Road and Frinton Road has confirmed that although significant sections of this treatment have performed to a satisfactory level there are quality issues on some areas. The root cause of these issues are being investigated at the moment and the sites will continue to be monitored and swept during the coming days and weeks. As confirmed, none of this work has been 'signed off' and accepted yet and we are working with our supply chain partner to understand what the causes are. I can confirm that this situation will be rectified as soon as a resolution is determined, and the remedial works required will not increase the target price originally submitted by our contractor. I will ensure you are kept in the loop with developments." **Head of Construction**

The officers have had a good month to get this mess sorted. I have requested an update as, clearly, no rectification work has taken place. I promise to keep you posted.

#### **Seafields Road – Local Highways Panel application**

The issue raised by a number of residents of how this very narrow road can somehow allow traffic flow without churning up the verge and destroying the paving slabs and tarmac has been considered. A 'validating engineer' has visited the site and undertaken a validation and proposed that works are justified. The Local Highways Panel will consider adding this work to the schemes awaiting funding.

#### **Citizens Advice Bureau – Holland on Sea**

Thanks to funding from the ECC Local Services Fund, the **CAB** and **HRA** have worked together to create a Monday Morning Advice Session in Holland Library. This is by appointment only (to book ring CAB Clacton on 01255 377080 ext. 111, Monday to Thursday 9.30am to 4.30pm). The advice is impartial and confidential and will cover any issues e.g. consumer problems, benefits, debt, pensions, legal, elder abuse etc. Special thanks and appreciation goes to local resident **Mrs Sidney Mowatt** for voluntarily providing this service to Holland residents.

#### **The HRA Holland & East Clacton Hoppa Bus**

The HRA's unique **door2door** shopper bus service continues operating on Tuesdays to Morrisons, Great Clacton; and Clacton Shopping Village for just £3 return. Jon, the driver, will be also running special trips. Simply give me a ring to book on **07541 321275**. **Walton Market and Parkers Garden Centre (for plants, coffee & chat)** on Thursday, 1<sup>st</sup> August £4 return.



**The HRA's Holland & East Clacton Hoppa Bus Service**  
- supporting our **LOCAL** theatre  
**Door2Door** from your home to the **West Cliff Theatre** and back; a pre-performance cuppa; and good seats in the house for just **£14.50**.  
**Matinee performance at 2pm on Tuesday 20th August.**

### **Frinton Road inconsiderate/dangerous parking**

Everyone is aware of the two and four wheeled parking on the pavement along Frinton Road. I have requested ECC investigate introducing unloading/loading restrictions on this stretch of road via a Traffic Regulation Order revision. The benefit will be the causing of 'immediate' enforcement of the double yellow lines. Consultation will need to take place.

### **Parking Partnership Camera Car**

Residents have my commitment to encourage the Parking Partnership to be allowed to deploy its Camera Car on ECC Highways in an effort to improve the enforcement efficiency at unloading restriction points, bus stops and school entrances etc. This would replicate Colchester, Braintree, Harlow, Uttlesford, and Epping Forest districts.

**Tending Specialist Stroke Services** I attended the Stroke Services/Colchester University seminar at Colchester University. Very, very interesting work being done by the team in Frinton Road...



### **HRA's 'KIK Plastic' Beach Clean**

Holland on Sea & East Clacton

Sat. 27th July 10am meet

York Road car park.

Please come along with your gloves and black sack and join the

**'Kik Plastic' Beach Clean**

**Cycling 7,200km around the UK and Ireland's coasts, building a community against plastic.**

### **Holland on Sea Library – STOP PRESS**

ECC Cabinet decision = 23<sup>rd</sup> July, we will then know ECC plans for each of the 74 individual libraries particularly Holland on Sea.

The joint HCA/HRA campaign group and I, will then call a Public Meeting for our community to determine our next steps in protecting this critical and most valued public service. We will keep you posted.

**“Until I feared I would lose it, I never loved to read.  
One does not love breathing.”**

### **Help Save Our Holland Library**

Thanks for your kind support, it is much appreciated. Please keep your Eyes and Ears reports coming in. Colin

Essex County Councillor Colin Sargeant – member of the Independent, Un-aligned Group at Essex County Council  
serving East Clacton, Great Clacton\* and Holland on Sea  
Tele: 07541 321275

**SHOP LOCAL DINE LOCAL SMILE LOCAL**

**SAVE the staffed HOLLAND LIBRARY**



## THE CHANGING FACE OF TRADE IN HOLLAND

In common with high streets up and down the country, we have seen a fair number of shop closures here in Holland. However, unlike in many other areas, an equal number have opened with several premises being given truly impressive make-overs in the process.

During the past year we have welcomed a wide range of new businesses adding to the list of goods and services available locally. These include Lola's Hair Boutique, Lily's Florist, FJG Solicitors, e-care recruitment agency, the Emporium, Arrow Bathrooms & Kitchens and, most recently, En-pointe Dance shop and Clacton Printers.

In addition, Styles & Smiles has moved into larger premises and the Kingscliff Hotel has undergone a major refurbishment so our village is thriving and looking good in the summer sunshine.

You will see some new advertisements in this magazine and we are extremely grateful to businesses new and old who support the Association in this way. Let's try to return the favour by giving them our custom.

Jill Rulten

The **Holland Residents' Association Beach Cleaning** lead, Lee Lawrence, had great pleasure in presenting the Haven Beach Café (at Holland Haven) with its Beach Cleaning A Board. This A board and its equipment enables café visitors to beach clean with the provided litter pickers and place litter in provided black sacks before logging any 'finds' onto the HRA's website. Holland's other wonderful beach cafés will shortly receive their boards and equipment."

Paula, the joint owner of Haven Beach Café said "Jackie and I are obviously very interested in the beach and promenade remaining a delight to view for our customers; and this a great way for our café to work in partnership with the Holland Residents' Association and Tendring Council to protect the wonderful setting we are so fortunate to enjoy. What Dave has designed is fantastic. Every crisp packet off our beach must be treated as a success."

Lee, from the HRA said "The beach, promenade and greensward are Holland on Sea's diamonds. Our village's businesses actively protecting and promoting our wonderful sunshine coast is a bonus. Working together we all can achieve so much. I thank Dave for his creativity and community spirit. Our next Beach Clean is on Saturday, 27<sup>th</sup> July 10am as part of the national KIK PLASTIC initiative. We would like villagers and visitors to meet at York Road car park at 10am.



Photo: Dave Donnelly Holland resident, who voluntarily made the board, Paula and Jackie joint owners of Haven Beach Café, and Lee Lawrence, the HRA's Beach Cleaning lead.

## HOLLAND HAVEN PRIMARY SCHOOL



It is indeed a great privilege to be the Head teacher of Holland Haven Primary School. In 2011 I moved to Clacton as, like many people, I desired a life by the sea. Little did I know that, a year later, I would be lucky enough to be working in such a wonderful school. Holland Haven currently has 350 pupils and this number will be growing over the next few years to approximately 415 pupils.

We are so fortunate to be part of the Holland on Sea community. We have many excellent opportunities available to us such as the beautiful new beaches, Haven

Country Park, Gunfleet Sailing Club etc..

We have amazing support from our local residents, a number of whom are also on our governing board. Over the past few years, Holland Haven School has grown in popularity. Our children are a credit to us in terms of academic achievement and behaviour and Ofsted recently supported this in their November 2018 report.

Over the past few years our children have been keen to take part in local events and projects. One project which was popular with our elderly residents, was the 'Spreading the Happiness Project' which our youngest pupils took part in. They were able to visit (and still do) local residential homes where they did various activities with the residents.

Finally, I must mention, on 11th June Holland Haven School football team won the local football league. The final match was very exciting and we were thrilled to win the cup.

Thank you for inviting me to contribute to your magazine.

Mrs Sue Bardetti  
Head Teacher  
Holland Haven Primary School



### **Holland-on-Sea Scarecrow Festival 16<sup>th</sup> – 24<sup>th</sup> August**

We'd love you to create your own Scarecrow to be displayed outside your home or business in Holland-on-Sea this summer. This year's theme is

#### **CHARACTERS FROM CHILDREN'S TV OR CHILDREN'S FILMS.**

Important: please register your intention to make a scarecrow **BEFORE** starting. Contact Julie on 813212 or email [julie.collitt@btinternet.com](mailto:julie.collitt@btinternet.com) to obtain further information. This is a fantastic family community event run jointly by Holland Residents' Association and St. Bartholomew's Church.

## A MESSAGE FROM OUR MP GILES WATLING



Dear Resident,

As I have said before, it never fails to surprise me how quickly time passes, particularly since I became an MP, and I can't believe that we are already in May. This has certainly been a busy year and I am writing to update you on my activities so far.

Improving the service at ACE surgeries is my main priority and I have held productive talks about healthcare improvements with the new Accountable Officer for the North East Essex Clinical Commissioning Group, Dr Ed Garrett. I am glad to see new performance measures being imposed and new investments being made to ensure greater GP capacity. I will continue to push hard on this as the level of service residents are receiving remains unacceptable, although there are some signs of improvement. I will be meeting Dr Garrett again with Ian Davidson, Chief Executive of Tendring District Council.

Of course I remain busy on many other fronts including education, securing road and rail infrastructure investment and improvement, meeting local organisations, charities and businesses. If you know of any organisations, charities or businesses that would like to meet with me please do encourage them to contact me.

I know that some of you were able to join me for my first mobile bus surgery, which visited Holland-on-Sea on 15<sup>th</sup> March. I will be holding similar events in the future and will keep you updated. And speaking of firsts, I am hosting my first ever Older People's Information Fair at Prince's Theatre on 18<sup>th</sup> June.

Finally, I would like to express my disappointment at the local election results in our area and I am saddened that we have lost so many hard-working councillors. Nevertheless, this backlash was not completely unexpected given events on the national stage, and as I said prior to the vote, I do not despair at anyone who decides to vote for another party. Because I hope that the Government's negotiators, and those from the EU, will finally understand the strength of feeling on this matter, and the level of resentment that is being engendered by their actions. You can read my full statement on the Local Elections, and other news items, on my website: <https://www.gileswatling.co.uk/>. If you would like to discuss any of these issues further, or if you have any other concerns, please do drop me an email on: [giles.watling.mp@parliament.uk](mailto:giles.watling.mp@parliament.uk).

Until next time

All the best

**Giles**

Letter of thanks received from the Essex Wildlife Trust



Dear Verity,

Thank you so much to you and all the members of the Holland-on-Sea Residents Association for generously supporting Essex Wildlife Trust's bra recycling scheme. Christine at the Naze Centre has kindly passed them on to me and your four donated bags of bras have raised approximately **£57.60**.

The bras you donate to Essex Wildlife Trust are recycled by a clothes processing company based in Benfleet (one of our Investors in Wildlife). Some bras will be resold in second hand markets at reduced prices in Eastern Europe, and some will be sold in the markets in West Africa. There is unfortunately a shortage of bras for these markets because most people put them in the bin! Essex Wildlife Trust is paid £1,500 per tonne of bras, which works out to around 7p per bra on average. This is a wonderful source of income for us, and also prevents second hand clothing going into landfill.

Last year we raised £1,292.40 from bras donated to the Trust and we hope to improve upon this figure this year. I am really keen to expand it where possible, and it's great to know that ladies such as yourselves are raising the bar in this way!

Thank you again for your continued support. If you would like any further information about our recycling scheme, please don't hesitate to contact me.

Best wishes,

**Claire Rodie** Fundraising and Events Assistant Tel: 01621 862996



### Get Cycling!!!

We meet once a month on the last Sunday of every month for a cycle ride. We meet at 10.30 opposite Brighton road on the top promenade.

This is open to all ages from children to grandparents. We are a friendly group who just cycle on the path. Cycling can help with getting fit, weight-loss and depression. It also cuts our carbon footprint.

Did you know :

It only takes between 12-15 minutes to cycle from Holland to Frinton and Holland to Clacton pier takes 10-12 minutes, but by car it's longer and more costly apart from the time it takes to find a parking space.

So come along and have a leisurely cycle ride with us. Dave 07549007380

## PURPLE PALS

Firstly can I say a **BIG** thank you to everyone that has supported **the** group, we have only been running for just over a month and the response is overwhelming. We meet on a Sunday morning every 2 **weeks** as a non profit group with the aim of raising awareness and support for **all the** animals that have served in both Military and Civilian Roles.

Our **meeting point** is York Road Car Park 11am our **upcoming dates** are **JULY 7TH & 21ST, AUGUST 4TH & 18TH.** **See you all there**

**Naomi Lawrence**

**Purple Pals Co-ordinator, 07739 353567, nova\_nams@me.com**

**Clacton and Holland Fossil and Prehistory Roadshow**  
**Saturday, 20th July 10.30am to 5pm**  
**St. Bartholomew's Church Hall, Frinton Road**

(organised by Southampton University and local collectors)

You will learn about the SU's research into the prehistoric people and animals from a land now under the North Sea.



**ROYAL BRITISH LEGION - HOLLAND ON SEA BRANCH**



Well what can I say; it has been a very exciting, challenging, and rewarding couple of months.

After our formation meeting back in March that was attended very well indeed, we had an admin period so that relevant paperwork could be processed and the correct ticks to be put in the right boxes.

I was delighted to get a phone call from RBL Head Office on 5<sup>th</sup> June to inform me that the Branch had been approved and signed off; this was all to coincide with the D Day commemorations. So needless to say I had another reason to have a lump in my throat and a tear in my eye that day.

Now we are full steam ahead with the War Memorial and Poppy Appeal at the forefront of this years activities as well as some social events.

These events as well as membership to the Branch are open to anyone Military or Civilian, young or old.

We meet on the 4<sup>th</sup> Saturday of the month in The Tavern, Frinton Road 11am tea and coffee provided. We look forward to meeting you.

I would like to end by saying THANK YOU again for all of your support

**Lee Lawrence**

**Chairman**

**Holland-on-Sea Branch**

**The Royal British Legion**

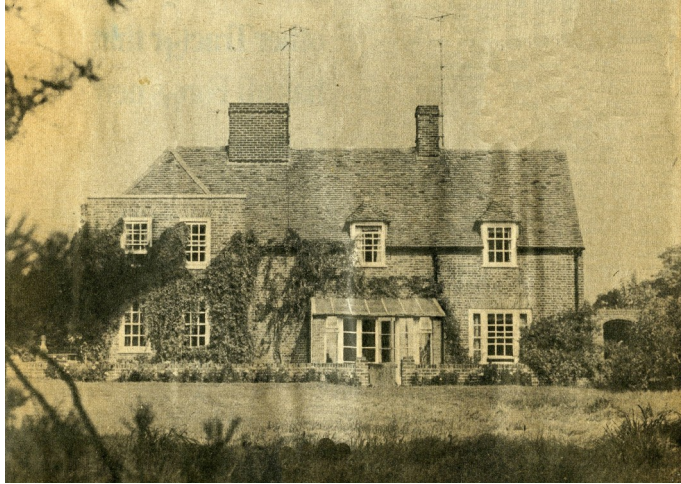


You do not need to be on Facebook to look at our page. Just search Holland Residents Association Facebook page and you will find us.

The page is now being used on a daily basis. Warnings of scams, local news, lost and found, reports on beach cleans and cycle rides are all included. At times we reach 25.5k people through a post being shared with others and get 6.7k responses.



## Little Holland Hall and its Famous Resident



As we rush towards Frinton, or head back to Holland on Sea across the marshes, in our busy lives, we momentarily see Little Holland Hall by the Frinton Road/Kings Parade roundabout but how old do you really think it is? Well, it is older than it appears, and it already looks quite historic (if presently rather dilapidated). Whilst it has had

“more recent” additions, its timber framed structure goes back over 400 years to the Tudor period. Those with really sharp eyes will also spot a boundary stone that identifies the ancient burial ground that the Hall sits in. Back in the 12<sup>th</sup> century a small church was built on the site, the ruins/foundations of which were exposed in the 1980’s when the sheltered accommodation was built. And back in Elizabethan days there was a landing place in Little Holland Hall ground for the Gunfleet estuary which ran up to the Hall.



But let’s fast forward in time to the Second World War when Arthur and Brenda Christiansen, looking for a new place to live, came across and fell in love with the Hall, purchasing the property and making it their home. Now Arthur became one of Holland on Sea’s most famous residents. He was born in 1904, in Wallasey, Cheshire and at 16 became a reporter for the Wallasey & Wirral Chronicle, his journalistic flair shining through. By 1926 he was working for the Sunday Express and it wasn’t long before he was Assistant Editor, becoming the Editor of the Daily Express in 1933 at the age of 29; a post he held until 1957. Arthur was much revered in Fleet Street, working for his boss Lord Beaverbrook (known as “the Lord” rather than “his Lordship” by those working for him), and increased the circulation of the paper; going from 2 million in 1936 to 4 million in 1949. Arthur strove to ensure the very best journalism from his paper and would be keen to impart words of wisdom:

*“The people who lived behind those clean lace curtains, in row after row of identical boxes were newspaper readers, and every word in, at any rate, my newspaper must be clear and comprehensible to them, must be interesting to them, must encourage them to break away from littleness, stimulate their ambition, help them to want to build a better land.”*

*“Show me a contented newspaper editor and I will show you a bad newspaper.”*

*“My approach to newspapers was based on the idea that when you looked at the front page you said: 'Good heavens', when you looked at the middle page you said: 'Holy smoke', and by the time you got to the back page, well, I'd have to utter a profanity to show how exciting it was.”*

Away from work he would relax with his wife and four children at Little Holland Hall, surrounded by mementos; photographs and documents autographed by famous people of the day, including letters to him from Field Marshall Montgomery. “Monty” related how every time Mr. Christiansen sent him a photograph of one of his opposing generals, its presence in Montgomery’s Caravan HQ seemed to assist in the downfall of that enemy

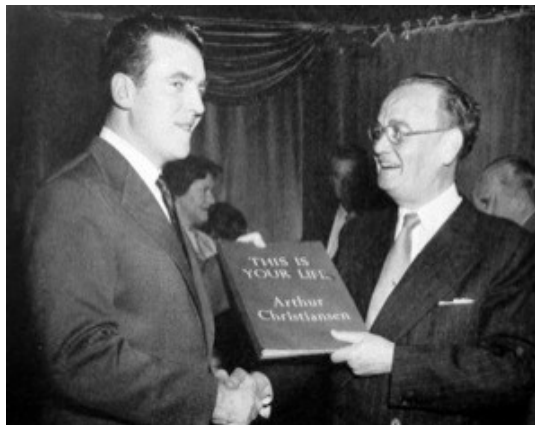
Arthur Christiansen was the subject of Eamonn Andrews’ BBC programme This Is Your Life in 1957, and in 1961 he appeared in a film “The Day The Earth Caught Fire” where he played the editor of a national newspaper – yes, you guessed – the Daily Express! Two years later

Arthur was once again in a film, this time playing a news editor in the movie “80,000 Suspects”.

Sadly, in 1963 Arthur died but his widow Brenda lived on at Little Holland Hall, and every year she would open the Hall up to a local art exhibition.

Fortunately Little Holland Hall became a listed building as there was, at one time, a proposal to demolish it. In July 1987 plans were put forward

to convert the Hall into part warden’s residence, offices and communal area. Anglia Secure Homes saw the potential to develop the site as a sheltered housing complex. The local residents had concerns about the future of the Hall but a letter to the Clacton Gazette on 5 February 1988 from the Group Managing Director R. S Clough assured the community that Anglia Secure Home plc had the highest intentions for Little Holland Hall and finished by stating .... “Rest assured that it is this company’s intention to provide a caring and considerate attitude during development and for our clients and surrounding residents thereafter”.



With thanks to **Richard Walker** for sharing this fascinating history of Little Holland Hall



## Holland Hounds

Professional Pet Stylists

FOR ALL YOUR FABULOUS FURBABIES NEEDS

01255 814290/ 07396377059

64 Frinton Road, Holland-on-sea CO15 5UW  
www.hollandhounds19.simplesite.com



A new open plan Pet Parlour  
fully equipped,  
insured, qualified and  
experienced.

We welcome all Breeds, sizes  
and temperaments.

We offer Free Consultations  
and our

Prices are competitive.

Stylist Nicky is soon becoming  
a Master Groomer, has a  
foundation degree in animal  
management, pet 1st aid trained,  
and has over 12 years experience.

She has worked with most  
breeds & can groom  
pet trims to breed standard.

We offer all services from nail  
& face trims to baths & brushes  
& full pamper packages.

## OPENING 23RD SEPT

ADVANCED BOOKINGS

ON 07396377059

01255814290

FROM 1ST SEPT

Prices from £30 for Full Grooms

Bath & Tidies from £25

Bath & Brushes from £20

## I'M SO OLD THAT

I HAVE DIALED A ROTARY PHONE (THAT  
DIDN'T HAVE AN ANSWERING MACHINE),

RECORDED A SONG THAT I LOVE OFF A

TRANSISTOR RADIO ONTO A TAPE RECORDER,

WATCHED A BLACK AND WHITE TV (WITH LESS

THAN 10 CHANNELS) THAT HAD FOIL ON THE

RABBIT EAR ANTENNAS, TAKEN A LONG WALK

WITHOUT COUNTING THE STEPS, AND EATEN

FOOD THAT I DIDN'T TAKE PICTURES OF.

## BREAKING NEWS:

There's been a fight in  
a biscuit tin. A lad called



hit a



with a



tied him to a



with a



then made his

in a



Police say



was last seen



in Maryland

with a



known to police as



they didn't leave a crumb of  
evidence so the



got away with it...



# Cards & Crafts Collection

Are you bored with seeing all the same things on the High Street?  
Why not pay us a visit and get something that little bit different

**LADIES GIFTS** – A fantastic selection of Summer Hats, Fascinators, Jewellery, Scarves, Scarf Rings, Bags, Purses, Handkerchiefs Fashion Spectacle Cases, Snoozies, Slippers, Incense & much more

**MEN'S GIFTS** – Panama Hats, Leather Messenger Bags, Magnetic Therapy Bracelets, Travel Mugs, Handkerchiefs, Thermo-Relief Heat Packs.

We also stock RFID Scan Prevention Credit Card Holders, Wallets & Purses



For that person who has everything – Why not present them with our delicious Mrs. Bridges Traditional Preserves, Chutneys, & Fudge Gift Packs. Also New Design Mini Birthday Fruit Cakes

Don't forget our usual Gift Range for all occasions, including Birthdays, Anniversaries, Birth & Relations. Also our vast range of quality Greeting Cards, Gift Wrap/Bags, Party Badges/Banners, Helium Balloons & Stationery. If you can't see it please ask

**OPEN**

Mon - Fri  
9am - 5.30pm  
Sat 9am - 5pm

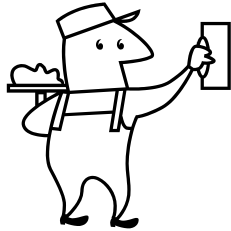
**COMING SOON –**

Exclusive & Stunning Chocolate Bouquets  
Also New Season Clothing &  
Gifts you won't find elsewhere



90 Kings Avenue,  
Holland-on-Sea, CO15 5EP

Telephone **01255 815792**



## Mick Griggs

Local tradesman with 25 years experience

### **PLASTERING BUILDING WORK - PAINT- ING HOUSE MAINTENANCE**

Reasonable rates

Free estimates

Quality and clean workmanship

6 Hillside Crescent

Holland-on-Sea

Telephone 01255 714481 - mobile 07743 468392



also **GARDENING WORK** undertaken  
regular grass cutting with edges trimmed - borders tidied -  
pruning. One off jobs also welcome



Interested in Art?

Learning to paint and



## Holland Art Society

### Why not join Holland Art Society?

At our monthly meetings we have demonstrations by experienced artists ,  
a “paint-along” and Christmas Social (a good fun evening).

We even have a Gallery to sell your work locally!

Beginners, experienced artists, or anyone interested in art, are all welcome.

Our meetings are held at St.Bartholomew’s Church Hall, Frinton Road,  
Holland On Sea on the second and last Wednesday of every month at 7pm  
with free tea or coffee.

We have seven competitions throughout the year, and look forward to seeing you  
there.

**For enquiries please contact the secretary  
Ian Findlay 01255 812265**



# Summer.

Hair gets lighter. Skin gets darker.  
Water gets warmer. Drinks get colder.  
Music gets louder. Nights get longer.  
Life gets better.

**They only get one start in life**

**Make it a good one with Ace Tuition**

Professional & experienced  
tutoring for primary through  
to high school students

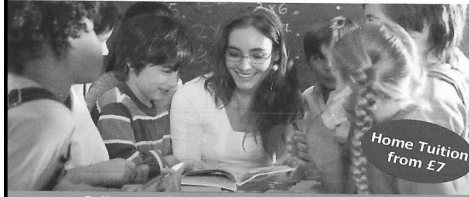


☒ Reading ☒ Spelling ☒ Comprehension

☒ English ☒ Maths ☒ Science

☒ 11+ tuition ☒ GCSE (all subjects)

Fees start  
from £12



Home Tuition  
from £7

Call or email us today for a FREE assessment

01255 688896

[acetuition@hotmail.co.uk](mailto:acetuition@hotmail.co.uk)

[www.acetuitioncolchester.co.uk](http://www.acetuitioncolchester.co.uk)

# AVENUE

## GARAGE DOORS

REPAIRS | NEW DOORS | AUTOMATION

New automated  
garage door from  
£850!

New manual  
garage door from  
£595!

Fitted for free.

Repairs from £45 plus parts.

01255 722979

07792932020



## **" Delivering Great Lunches To Your Door "**

*Homemade meals for the elderly*

*A dedicated team of cooks and deliverers offering care catering to senior folks  
in our local community*

*What we do*

- \* OUR FOOD IS HOMEMADE NOT SHOP BOUGHT AND REHEATED**
- \* CHOOSE YOUR FAVOURITE DISH EACH DAY (subject to notice)**
- \* WE BUY OUR MEAT FROM LOCAL BUTCHER CHAS. BOWER**
- \* OUR MEALS CAN BE ADAPTED TO SUIT YOUR TASTES**
- \* BE ASSURED OF OUR EXPERIENCE IN CARE CATERING  
IN THE COMMUNITY OF OVER 20 YEARS**
- \* A HIGHLY REGARDED BUSINESS WELL KNOWN TO  
SOCIAL SERVICES AND LOCAL HOSPITALS**
- \* A DEDICATED POINT OF CONTACT, THE PROPRIETOR, JULIA NOLAN**

---

**Contact Julia on 01255 -434050**

***www.tradhomemeals.com***

***e.mail - tradhomemeals@gmail.com***

***4 Buchanan Units, Stephenson Road, Clacton CO15 4XA***





**STONERIDGE**  
ESTATE AGENTS

Your Local Agent...  
Connected to  
London Buyers

**Tel: 01255 43 58 58**

[www.stoneridge-estates.co.uk](http://www.stoneridge-estates.co.uk)

1 Arcade Buildings, Station Road,  
Clacton on Sea, Essex, CO15 1SS

37 Frinton Road, Holland on Sea,  
Essex, CO15 5UH





**Independent Financial Advisers Since 1951**

**Contact us for help with all your financial planning needs**

Call us on: **01255 254440**

or email us at: **[geoff.moore@hurst-group.co.uk](mailto:geoff.moore@hurst-group.co.uk)**

Unit 14 Crusader Business Park, Stephenson Road West, Clacton on Sea, Essex, CO15 4TN



Hurst Insurance Services is a trading style of R J Hurst & Partners Ltd.  
Authorised and regulated by the Financial Conduct Authority

## **HOLLAND-ON-SEA 129 LADIES CLUB**

Holland 129 Club meets at Holland-on-Sea Methodist Church Hall in King's Avenue. Our meetings take place on the first Wednesday of each month. Doors open at 7.30 pm for 8.00 pm start.

Our Summer programme is as follows:

### Wednesdays

14 August 2019	Garden Party at Member's Home (2.30 pm – 5.30 pm)
4 September 2019	'I do like to be beside the Seaside' by Mr David Whittle

We are a friendly Ladies Club and visitors will be made very welcome - £3 per evening or Annual Membership from April £20. Refreshments are served at each meeting.

For further details, please contact either Carole Parmenter 01255-813315 or Mary Edwards 01255 436618.

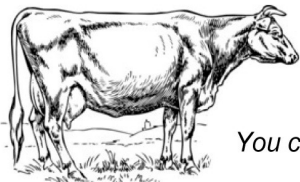
# CHAS. BOWER

KINGS AVENUE  
HOLLAND ON SEA

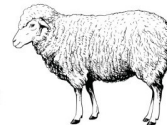
## BEST QUALITY MEAT ONLY

FARM FRESH TURKEYS - BONELESS TURKEY BREAST  
DUCKS - GEESE - CHICKENS - GAMMON  
LOCAL BEEF, LAMB AND PORK  
FREE RANGE EGGS

**A TRADITIONAL FAMILY BUTCHERS WHERE QUALITY COUNTS  
AND THE CUSTOMER ALWAYS COMES FIRST**



FRESH VEGETABLES  
*Business goes where it is invited  
And stays where it is well treated  
You can, with confidence, place your order with  
Chas. Bower.....01255 812333*



## Legal Services all under one roof



When it comes to your legal needs, FJG offer a full range of tailored legal services for you, your family and your business. These include family law, personal injury, wills, probate & trusts, employment, litigation, business & personal immigration, commercial and residential conveyancing, planning, business start ups, structures, partnerships and contract advice. Helping you to keep all your legal affairs under one roof.

**Call us today and discover why we are  
an award winning firm.**

**For you and your business**

**01255 442474**

**FJG**  
FISHER  
JONES  
GREENWOOD  
SOLICITORS



Fisher Jones Greenwood LLP  
104 – 106 Kings Avenue,  
Holland-on-Sea, Essex, CO15 5EP  
01255 442474  
enquiry@fjg.co.uk  
www.fjg.co.uk





## swimming pools & spas

Swimming Pool Kits From £3,995



01255 818381  
125 Frinton Road, CO15 5UP

Fully Delivered and Commissioned

Just **£3,499!**

Includes: steps, cover, chemical starter kit and a full chemical induction.



[www.spspoolandspa.com](http://www.spspoolandspa.com)

## R. GWINNELL & SONS

Family Funeral Directors and Monumental Masons

R. Gwinnell & Sons pride themselves on offering a full and personal funeral service tailored for you or your family's wishes, bespoke funeral plans and memorials suitable for any location. We are proud to say, "We never take commission from florists, probate advisors, printers or caterers." We are happy to offer free information and advice, without obligation

351 Holland Road  
HOLLAND-ON-SEA  
01255 815600

We are available at anytime, day or night.

TRADITIONAL BLACK ROLLS ROYCE HEARSES AND LIMOUSINES  
AND SILVER ROLLS ROYCE HEARSE AND LIMOUSINE

Members of the National Association of Funeral Directors

Under New Local Management



# "SEA" OUR NEW RESTAURANT



Reserve a table online at [www.thekingscliffhotel.co.uk](http://www.thekingscliffhotel.co.uk)



**Book Now, Call 01255 818800**  
[mev@thecliffhotel.com](mailto:mev@thecliffhotel.com) | [www.thecliffhotel.co.uk](http://www.thecliffhotel.co.uk)  
Kingscliff, 55 Kings Parade, Holland-on-Sea, CO15 5JB

Launch Night  
Photos by Robert  
Wong Creative  
Photography

**WELCOME TO ALL THOSE WHO HAVE RECENTLY MOVED INTO OUR FRIENDLY COMMUNITY.**

## EDITOR'S CORNER

Doesn't time fly when you are having fun ?

With this edition of the magazine I will have been producing what was at first a newsletter of few pages and has now grown into a 64 page magazine for 10 years. It is amazing how this has developed from the simple pages to full colour with loads of information and facts about what is going on in Holland plus some light hearted items too.

It is a mammoth task putting it all together and I thank each and every one of our contributors who have been providing so much information and also to our advertisers without whom we would not be able to produce the magazine due to the cost of printing and distribution.

Thank you all both contributors and readers



**Verity**

## **JAM JARS WITH METAL LIDS WANTED AGAIN**

Strawberry Sue and Marmalade Mike have been so busy selling jams and what-nots at the late riser boot sale that they are running out of jars with metal lids again. Over the bank holiday weekend they sold over 200 jars of jam and marmalade.

They are working really hard to raise funds for the Air Ambulance.

We are, therefore, requesting your jars again. Please contact

Dave -07549007380 and I will come and collect them from your doorstep.

There is a new flavour jam that Sue is calling 'cockney'jam. See if you can guess what it's made from!!

All the jams are yummy and you will be eating for charity.

## HOLLAND RESIDENTS' ASSOCIATION – ANNUAL MEMBERSHIP

Personal Details

PLEASE PRINT

Name

Address

Post Code

Telephone Number

e-mail

Can we contact you by e-mail? Yes/No Telephone? Yes/No

Please take this completed form and your subscription to Kings Avenue Post Office (cheques payable to Holland Resident's Association please) Our postmaster makes no charge for this service

**Data Protection Act:** In providing your personal details you are giving consent for them to be stored on the Association's membership database. No Information will be divulged to any third party.

Printed by Dolphin Press and promoted by Tony Rulten 23 Chelmsford Road Holland-on-Sea on behalf of the Holland-on-Sea Residents' Association c/o 23 Chelmsford Road, Holland-on-Sea CO15 5DN

For Post Office/HRA use only

Amount received.....

Date.....

RECEIPT FOR SUBSCRIPTION FEE PAID

TO HOLLAND RESIDENTS' ASSOCIATION

Amount Paid.....

Minimum £2 per household per year

RECEIVED WITH THANKS

POST OFFICE STAMP





## **Do You Or A Loved One Need Care Or Support At Home?**

*Due to recent expansion and opening a new office in Holland on Sea, E Care are opening their books to new client referrals on a first-come, first-served basis.*

All support levels are catered for, from two calls a day to 24-hour round-the-clock support.

- |                             |                       |
|-----------------------------|-----------------------|
| •Personalised Care Packages | •Medication Reminders |
| •Elderly Care               | •Laundry              |
| •Dementia Care              | •Domestic Tasks       |
| •Mental Health Care         | •Companionship        |
| •Respite Services           | •Palliative Care      |
| •Meal Preparation           | •Hospital Discharge   |

Call: 01255 80 81 80 (Option 1)

[www.ecare-community.co.uk](http://www.ecare-community.co.uk)

Email: [manager@ecare-community.co.uk](mailto:manager@ecare-community.co.uk)

**Choose E Care... Because We Care**



## Work For Us?

**Join Our Team And Become  
Part Of The E Care Community**

### Why Work For E Care?

- **FREE NVQ**
- **FREE Uniform**
- **FREE DBS Check**
- **FREE Stocked Staff Room**
- **PAID Mileage**
- **PAID Training**
- **PAID Shadowing**
- **PAID Great Rates**

**Full & Part Time Opportunities**

Want to work a few hours a week?

Do you like helping people?

Want to give something back?

Want to work near your home?

Want opportunities for unlimited overtime?

Call: 01255 80 81 80 (Option 2)

[www.carejobsessex.com](http://www.carejobsessex.com)

Email: [hr@ecare-community.co.uk](mailto:hr@ecare-community.co.uk)

**Choose E Care... Because We Care**



**On Your Doorstep**



Based in Walton-on-the-Naze, we provide a high quality and competitively priced Design & Printing service.

**We Print & Design:**  
Letterheads, Business cards, Comp Slips, NCR Pads, Brochures, Flyers, Booklets, Leaflets, Posters and MUCH MUCH MORE.

Please call or email for friendly advice and quotes.

**Dolphin Artwork & Print**  
T: 01255 850324  
E: [sales@dolphinartwork.co.uk](mailto:sales@dolphinartwork.co.uk)

## HOLLAND PHARMACY

77-79 Frinton Road  
Holland-on-Sea  
Essex CO15 5UH  
**tel: 01255 812 444**  
**fax: 01255 812 344**

### OPENING HOURS

Saturday to Wednesday 8am to 10pm and  
Thursdays and Fridays 8am to 11pm  
A delivery service is offered in the local area.

## Holland Pet & Garden Supplies



69 Frinton Road  
Holland-on-Sea  
Essex CO15 5UH  
Telephone  
**01255 815772**

## The Cook House at Grandma Lilly's

Homemade Cuisine

Breakfast, Lunch and Afternoon Tea

36 Frinton Road, CO15 5UL

**01255 815583**

## COMPUTER REPAIRS

30 years Corporate Experience  
Ex-BT Engineer  
Computer/Laptop Repairs,  
Upgrades, Virus Removal,  
Data Recovery  
Telephone **NIGEL**  
**01255 674048**

**pride**  
PLUMBING, HEATING AND BATHROOM FITTING  
Take pride in your plumbing, we do

Andrew Carr

Mob: 07917 334363

Tel: 01255 507773

[PridePlumbingBathrooms@outlook.com](mailto:PridePlumbingBathrooms@outlook.com)



## Support our local Library

Public Hall  
Frinton Road  
Holland-on-Sea  
CO15 5UR

### OPENING HOURS

**Monday: 1.00 - 5.00**

**Tuesday: Closed**

**Wednesday: 9.00 - 1.00**

**Thursday: 1.00 - 5.00**

**Saturday: 9.00 - 1.00**

**Friday & Sunday: Closed**



Some of you may well have heard this story before and to you I apologise, but in these uncertain times it is easy to be swept away in the anxiety of the daily news losing track of what really matters.

Like all good stories it begins once upon a time . . . There was a very successful artist who towards the end of his career settled on a Greek island, built a beautiful house with his wife and a number of small cottages in the grounds for visiting guests. The island had idyllic vistas of nature at every turn displaying the wonder of creation as one day melted seamlessly into the next.

He decided to invite a few old cronies for a week's stay all-inclusive and to challenge them to paint a picture of perfect peace, he would judge the paintings and the most inspiring would receive a considerable financial incentive, the painting to be displayed in his prestigious gallery- so everything to play for!

Naturally they were delighted to be asked and looked forward to the opportunity to enjoy a week's free board and lodging in these opulent surroundings whilst having the added pleasure of painting some scene from the local countryside.

They arrived very excited and their host was equally uplifted by their enthusiasm.

At the end of the week the artist studied each painting carefully, there were six in all capturing the beauty of the magnificent sunrises, sunsets and the nature around the island this was going to be a tough decision but the last painting the artist stood back aghast. The painting was almost black depicting a savage storm, lightning flashes, dark threatening clouds scudding across the sky. He glared at the artist and demanded

"What's this got to do with perfect peace?"

The candidate explained that if you looked carefully at the picture there was a tree! And in the tree was a little nest in the nest was a little furry head. That said the candidate is "Perfect peace" you see amid all the storms of life that is where peace is.

When Jesus said as recorded in the Gospel of St John chapter 14, verse 27.

**"Peace I leave with you; my peace I give you. I do not give to you as the world gives. Do not let your hearts be troubled and do not be afraid."**

This was what Jesus was talking about, in all the chaos and anxiety of this world we should not forget the tranquillity of the world to come. So be joyful, spread love and even in the darkest moment know that you are never alone, for God is after all only a prayer away.

The Revd Susan Wiggins, associate priest  
St. Bartholomew's church, Frinton Road.





**Kids, Teenage and Adults Martial arts classes**  
**Helps: Discipline and Respect, Confidence,**  
**Coordination, Prevention Against Bullying,**  
**Staying fit and Having Fun, And Making New**  
**Friends**  
**To Book Your Free Introduction Class!**  
**Call: 07951842918**  
**Email: [richard.edgeckd@gmail.com](mailto:richard.edgeckd@gmail.com)**



# Love your Feet!

PODIATRY CHIROPODY PEDICURE

HCPC Registered Podiatrist / Chiropodist

**DON'T LET FOOT PAIN STOP YOU**  
**PUT A SPRING IN YOUR STEP**

Gait Analysis Orthotics & Insoles, Sports Injury Clinic



Don't let embarrassing nails spoil your feet

Cosmetic & Medical treatments for unsightly nails

Medical Pedicures, Toe & Nail Paint, Gel Toe Nails for a Perfect Finish

Routine Podiatry & Chiropody



PAINFUL UNSIGHTLY VERRUCA? INNOVATIVE & HIGHLY EFFECTIVE TREATMENT AVAILABLE



Holland Clinic: 98 Kings Ave  
Holland-On-Sea, CO15 5EP  
Tel: 01255 813673

Frinton Clinic: 82 Old Road  
Frinton-On-Sea, CO13 9BY  
Tel: 01255 678600

Wife to recently retired husband. ' What are going to do today?' Nothing, came the reply.  
I thought you did that yesterday, replied the wife.  
Yes, I did, said the husband, but I didn't finish.



Hand Ties



Funerals



Helium Balloons



Weddings



Bouquets

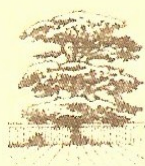


Plants

01255 815995

82 Kings Avenue, Holland on Sea,  
Essex CO15 5EP

**Gifts, Holly wreaths and Burlap wreaths available**



GARDEN CARE

Tel: 01255 813518

Email: [hollandtrees@sky.com](mailto:hollandtrees@sky.com)

Paul Thomas

**TREE SURGEON**

75 York Road, Holland-on-Sea, Essex CO15 5NW

Felling - Crown Reduction - Pollarding - Shaping - Pruning  
Hedges Trimmed - Seasonal Tidy Ups - Disposal / Recycling

ESTABLISHED 1989

FULLY INSURED





**A&E**  
**WINDOW DOCTOR**



**CARE AND REPAIR**



***"Bring your windows and doors back to life"***

**Established 1998**

**Services:**

- Window Repairs
- Door Repairs
- Conservatory Repairs
- Misted Sealed Units Replaced
- Kitchen Splash-backs
- Mirrors & Glass Cut to Size
- Locks, Handles and Hinges Replaced
- Emergency Boarding

**GET YOUR FREE  
ESTIMATE:**

Call **01255 763 942** now  
with your measurements  
for an instant quote to  
replace broken units

mob: **07837 240 131**

**[www.aewindowdoctor.info](http://www.aewindowdoctor.info) • [info@aewindowdoctor.info](mailto:info@aewindowdoctor.info)**





Repairs & Maintenance ~ Locksmith Services  
Existing Garage Doors  
Automated



### **Local & Reliable**

Same-day Service  
on most Emergency Repairs  
Out of Hours & Weekend Service



**Call Mick on: 07803127922  
or 01255 815479**

e-mail: [ace.garagedoors@btinternet.com](mailto:ace.garagedoors@btinternet.com)  
102 Salisbury Road, Holland on Sea, Essex. CO15 5LS

#### **SIX LITTLE STORIES**

1. Once all villagers decided to pray for rain. On the day of prayer all the people gathered, but only one boy came with an umbrella.  
That's FAITH.
2. When you throw babies in the air, they laugh because they know you will catch them.  
That's TRUST.
3. Every night we go to bed without any assurance of being alive the next morning, but still we set the alarms to wake up.  
That's HOPE.
4. We plan big things for tomorrow in spite of zero knowledge of the future.  
That's CONFIDENCE.
5. We see the world suffering, but still we get married and have children.  
That's LOVE.
6. On an old man's shirt was written a sentence 'I am not 80 years old. I am sweet 16 with 64 years of experience.'  
That's ATTITUDE.

Have a happy day and live your life like the six stories.

When I was a child I thought nap time was punishment...Now it's like a mini vacation.



I know that I have included lists like these before but I think that this one is a bit different !!

### EATING IN THE FIFTIES

Pasta had not been invented. It was macaroni or spaghetti.  
Curry was a surname.  
A take-away was a mathematical problem.  
Pizza? Sounds like a leaning tower somewhere.  
Bananas and oranges only appeared at Christmas time.  
All chips were plain.  
Oil was for lubricating, fat was for cooking.  
Tea was made in a teapot using tea leaves and never green.  
Cubed sugar was regarded as posh.  
Chickens didn't have fingers in those days.  
None of us had ever heard of yogurt.  
Healthy food consisted of anything edible.  
Cooking outside was called camping.  
Seaweed was not a recognized food.  
'Kebab' was not even a word, never mind a food.  
Sugar enjoyed a good press in those days, and was regarded as being white gold.  
Prunes were medicinal.  
Surprisingly muesli was readily available. It was called cattle feed.  
Pineapples came in chunks in a tin; we had only ever seen a picture of a real one.  
Water came out of the tap. If someone had suggested bottling it and charging more than gasoline for it, they would have become a laughing stock.  
The one thing that we never ever had on/at our table in the fifties ... was *elbows, hats and cell phones*.

### CARE WHEN ON OUR BEACHES

It is been reported that care is needed when walking on the beaches, especially with a dog, as fishermen are leaving lines, hooks and bait around which is very tempting for a dog to investigate. There is also a problem with dogs messing on the beaches and it not being cleaned up. Please remember that most of our beaches do not get washed by the tide and in any case it is essential that messes are cleared and deposited in a bin.



**Girlguiding UK**

Whoever you are. Whatever you do.

You can help by just being you.

Poets, engineers, mums, nans, aunties.. There's a place for all in Girlguiding:

As involved as you want to be, a couple of hours a week...

Interested? Register online .. always looking for helpers across Clacton, Frinton & Harwich...

Hope to hear from you..

<https://www.girlguiding.org.uk/get-involved/become-a-volunteer/register-your-interest/>

### **“ONTRACK” RAIL USERS ASSOCIATION - KEEPING TENDRING TRANSPORT A PRIORITY**

Our MP Giles Watling launched a report about the Clacton & Walton to Colchester railway line produced in collaboration with the Tendring Transport Liaison Group. As the GAZETTE reported < A RAIL group produced a report to highlight how a train line has been “neglected”> before dashing off to catch a train to London himself. Our MP GILESWATLING told the ONTRACK QUESTIONTIME audience that he has been lobbying the Secretary of State for Transport, meeting frequently with Gt. Eastern Mainline Taskforce and will pass on the report that has just been completed on the state of Tendring’s Rail Services to the minister. The Report is entitled <Colchester to Clacton & Walton – A Very Under Achieving Railway > which has been produced, in advance of the Greater Anglia 2020 timetable consultation, by the Tendring Transport Liaison Group set up by ECC Councillor Mark Platt. Should it not be also Clacton in 60 minutes from London, as well as Ipswich? Even the latest edition of RAIL magazine, the rail industry bi weekly, reports that the local Clacton lines fare revenue growth is static compared to almost all the other lines in East Anglia, which have seen increases in the number of trains and the level of service. The journey times are worse than the steam age and fares are also up, 25 per cent higher than those applying on average across Norfolk or Suffolk. The full report can be read or downloaded from ONTRACK WEBSITE <https://www.ontrackrailusers.org.uk/> .

### **IT’S A MEMORY THING !!**

**A husband and wife in their 90s are both having problems remembering things.**

**During a checkup, the doctor tells them that they’re physically OK, but they might want to start writing things down to avoid forgetting.**

**Later that night, while watching TV, the old man gets up from his chair.**

**“Want anything while I’m in the kitchen?” he asks. “Will you get me a bowl of ice cream?” “Sure ...” “Don’t you think you should write it down so you can remember it?” she asks.**

**“No, I can remember it.” “Well, I’d like some strawberries on top, too.**

**Maybe you should write it down, so as not to forget it?”**

**He says, “I can remember that. You want a bowl of ice cream with strawberries.” “I’d also like whipped cream. I’m certain you’ll forget that, write it down?” she asks.**

**Irritated, he says, “I don’t need to write it down, I can remember it! Ice cream with strawberries and whipped cream — I got it, for goodness’ sake!” Then he toddles into the kitchen.**

**After about 20 minutes, the old man returns and hands his wife a plate of bacon and eggs.**

**She stares at the plate for a moment. “Where’s my toast?”**



For all your catering needs  
Including: birthdays, weddings, engagements and  
funerals

Please call in at our shop to discuss your catering  
needs

or call us on 01255 317175  
111a Frinton Road, Holland on Sea, CO15 5UP  
Why not pop in for Coffee (or tea) and cake  
or maybe a light lunch – All Welcome

### **SCIZZOR SISTERS HAIRDRESSERS LADIES AND GENTLEMEN**

**01255 813381**

**Give a Girl the  
Right hairstyle  
And she will  
Conquer the World**



**74 Kings Avenue,  
Holland-on-Sea**

### **Frinton Road Butchers**

**Open Monday - Saturday**

Free home delivery

**01255 812075**

[frintonroadbutchers@yahoo.co.uk](mailto:frintonroadbutchers@yahoo.co.uk)  
[www.frintonroadbutchers.co.uk](http://www.frintonroadbutchers.co.uk)

### **FLAT ROOF PROBLEMS**

SOLVED PERMANENTLY  
WITH E.P.D.M. RUBBER  
25 Year Guarantee

Free Quotations

Friendly Advice

**Rubber Deck Roofing**

**01255 812777**

**0771 238 9009**



### **Above Roofing Ltd Re-roofs and repairs Tile and Slate**

Telephone

**01255 42 55 91**

Mobile: **07976 18 21 60**

[aboveroofingltd@aol.com](mailto:aboveroofingltd@aol.com)

### **Angel Landscapes and Designs**

a small, professional landscape gardening firm  
with RHS qualified staff that guarantees top  
quality with a personal touch  
portfolio available for inspection  
over 10 years experience  
local personnel

**Sean Hale**

**01255 421721 07813 048278**

[www.angellandscapes.co.uk](http://www.angellandscapes.co.uk)

The Committee of Holland Residents' Association would like to say a very big

**THANK YOU**

to all our loyal advertisers who have been supporting  
the production of this magazine . Without this help the magazine would not  
be possible.

We really appreciate your continued support



# KINGS AVENUE POST OFFICE AND STORES

We are a friendly family run business

**We have easy parking and can assist with most of  
your Post Office and Banking needs including:**

Cheque deposit & cash withdrawals free of charge from most major  
banks Santander, Co-op, Lloyds, Barclays, HSBC, First Direct, Halifax,  
TSB, Yorkshire Bank, Smile and Cahoot.

No charge for Council Tax payments by cash or cheque  
Free Utility bill payments on most bills including gas, electric and  
phone bills

Full Postal Services

Fishing Licences

## **WE ALSO STOCK**

Newspapers + Cigarettes + Basic Foods

Top Ups for Electricity, Gas & Phone

A good range of greetings cards and  
stationery for most occasions,

Locally produced Milk

**01255 812272**

Opening hours

Monday to Friday Shop 7am to 5.30 pm PO 9am to 5.30pm

Saturday Shop 7am to 12.30pm PO 9am to 12.30pm

Sunday Closed

**PAY YOUR HOLLAND RESIDENTS' ASSOCIATION  
SUBS HERE**

**SUPPORT YOUR LOCAL POST OFFICE**

## APPLIANCE SERVICES

www.appliance services-  
hollandonsea.co.uk

Visit our shop (opposite Roaring Donkey)  
369 Holland Road, Holland on Sea, Essex  
Washing Machines from £129



APPLIANCE  
REPAIRS

FREE local delivery  
Fridges, Freezers,  
Dryers, Cookers,  
Vacuums, etc  
Batteries, Bulbs, Belts,  
Filters - And Lots  
More



VACUUM  
REPAIRS

**Repairs - No call out charge**  
**Vacuum Repairs - Free Estimates**  
**(All cleaners repaired at our shop)**  
**Dyson & Hoover Specialists**  
Spares in Stock for All Makes  
**Tel: 01255 815760**

## Adrian Buizer - Optometrist

### Adrian Buizer

BSc(Hons) FBDO MCOptom  
60 Frinton Road  
Holland-on-Sea  
**Tel: 01255 814923**



## LEIGH'S LAUNDRY

**62 FRINTON ROAD, HOLLAND-ON-SEA**

Free Collection and Delivery  
Service Available

**'Go on, Let's Take a Load off Your Mind'**  
Telephone:  
01255 421470 / 07862 128057

## UNIQUE PLASMA CUTTING

*house numbers / plates  
garden features/plaques  
pets, equestrian in plate steel  
custom parts produced for  
cars, vans, motorbikes, trikes  
quads, boats and more*

*cant see what your looking for?  
email me with a picture /photo  
and the best of my ability begins  
with your request*

[upc2018@btinternet.com](mailto:upc2018@btinternet.com)

**01255 423108**

*formerly terry the fencer*





# ***M&M***

***Painting, Decorating,  
Wallpapering***

Mick & Marie  
a husband and wife team  
All jobs a pleasure, no jobs too small  
Free Estimates

01255 812300  
07891 18 08 46



## **MJF HOME IMPROVEMENTS**

*For all your home needs*

### **KITCHENS & BATHROOMS**

**FREE HOME SURVEY & CAD SERVICE**

**FROM A RANGE OF OVER 60 HOWDEN KITCHENS  
& 45 BATHROOM STYLES TO CHOOSE FROM**

Call MJF Home Improvements

**07905 709389    01255 812391**

Holland-on-sea



**MOUNTFIELD DEALERS   STIGA DEALERS  
LAWNMOWER SALES   RIDE ON MOWER SALES  
GARDEN MACHINERY SALES  
LAWNMOWER SERVICING   RIDE ON SERVICING  
BLADE AND SHEAR SHARPENING  
FREE COLLECTION AND  
DELIVERY**

21 Orwell Road  
Clacton on Sea  
CO15 1PP

Opening Times  
Monday-Friday 9 to 5  
Saturday 9 to 1

## **The Vintage Tea Room**



**8 & 12 Frinton Road Holland on Sea  
01255 317440**

**Open Monday to Saturday 9:00 till 3:00**

**Serving  
breakfast, lunch,  
hot meals,  
snacks**

**Hot & cold  
beverages,  
afternoon tea,  
homemade cakes**

**Also available a selection  
of beautiful home and  
gift items**

To Advertise in this magazine please contact  
**veritycoulthard@yahoo.co.uk**  
Advertising Rates  
Full page £80, half page £45, quarter page £30  
and one eighth page £20

## PAUL LAWRENCE

### Home & Garden Improvements

Local Trusted Tradesman  
Bathrooms and Kitchens fitted  
Decorating

Beach Hut repairs  
and maintenance

Please visit my website  
for further information and  
gallery of works  
[www.homegardenimprovements.co.uk](http://www.homegardenimprovements.co.uk)

**01255 818105**  
**07895 911595**

### HOW LONG UNTIL IT'S DECOMPOSED?



## Holland / Clacton on Sea Community First Responders



We are looking for new volunteers  
in the Holland and Clacton-on-Sea  
area, could this be you?



Email us today!  
[Clacton.cfr@hotmail.co.uk](mailto:Clacton.cfr@hotmail.co.uk)

facebook

twitter

[HollandClactonCFR](https://www.facebook.com/HollandClactonCFR)

[@SeasideCFR](https://twitter.com/SeasideCFR)

If you want to get in touch, visit our Facebook /  
Twitter pages or email: [clacton.cfr@hotmail.co.uk](mailto:clacton.cfr@hotmail.co.uk)

## **Masters & Misters**

THE ART OF MANLINESS

**TRADITIONAL BARBERING  
AND GENTS GROOMING**

4 FRINTON ROAD  
HOLLAND -ON -SEA CO15 5UL

CALL: 01255 814732

FIND US ON FACEBOOK:  
Master & Misters



# *Walking on Air*

## ***Mobile Foot Health Professionals***

***Diabetic foot, Toenail trimming, Ingrowing Nails, Thick nails,  
Fungal Infections, Corns, Callus & hard skin removal & more***

**Tel: 01255 431837**

**Richard Piper & Nikki Keary both MAFHP, MCFHP and associate  
members of the British Chiropody & Podiatry Association**



Visit our website: [www.walkingonairclacton.co.uk](http://www.walkingonairclacton.co.uk)



# THE EMPORIUM

We would like to welcome you to your new local shop. Selling Toys,  
Garden Ornamentals & Gifts for all occasions,

Located at 98 Kings Avenue, Holland on Sea, CO15 5EP  
Telephone 01255 483958

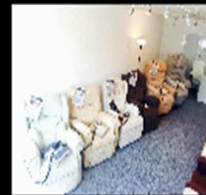


Open Monday to Saturday 9.00am – 5.30pm

# Electric Bed & Chair Co.

329-331 Holland Road, Holland on Sea, Essex, CO15 6PD

TEL: 01255 812211 Email: [electricbedandchairco@gmail.com](mailto:electricbedandchairco@gmail.com)



**SUPPLIERS OF QUALITY BEDS AND RISE AND RECLINE CHAIRS**



**FREE  
DELIVERY  
WITHIN  
TENDERING**





Holland Insurance Brokers are authorised and regulated by the Financial Conduct Authority





















































Painting & Decorating  
 Fence & Shed Spraying  
 Odd Jobs Done

Call Ray  
 01255 820160 or  
 07957 335184



























BAKERS OF PRIZE WINNING BREAD  
CONFECTIONERY & CELEBRATION CAKES

PROPRIETORS: JANE & JOHN SPARLING

117-119 FRINTON ROAD  
HOLLAND-ON-SEA  
ESSEX CO15 5UP

CLACTON 812334

## Fitsteps with Pauline's Pink Flamingos

**9.00am - 10.00am Saturdays**

**Holland on Sea Public Hall, 139 Frinton Road, CO15 5UR**  
**£5 Entrance**

**Put together by Ian Waite and Natalie Lowe of Strictly Come Dancing. The dance workout mixes the graceful steps of Ballroom and the up-tempo steps of the Latin where you don't realise you're getting fit. All you need is comfy clothes, trainers and plenty of water. No partner needed. Keep dancing!**

**For more details: Contact Pauline on 07788984206.  
Facebook: Fitsteps with Pauline's Pink Flamingos  
<https://paulinepinkflamingos.wixsite.com/fitsteps>**

## AGE CONCERN - EXERCISE

A new weekly group will be starting at The Methodist Church, Kings Avenue  
Holland on Sea

This group has been organised by Age Concern and  
is for anyone looking for moderate exercise according to their ability.

The Induction morning will be held in The Bains Hall on Wednesday 10th July at 10am  
when further details will be available from the qualified instructor.

If there are any enquiries prior to this induction morning  
please ring

01255 813375 or 01255 427386

**BEACHES** Tanning & Beauty Salon

Find us on **facebook** [www.beaches309.com](http://www.beaches309.com)

**Beauty Nails Tanning**

 **PRODUCT & SKIN CARE RANGE**  
As used by Royalty and Celebrities

**Universal Contour Wrap**  
**Body Massage**  
**Nail Extensions**  
**21 Day Manicure**  
**Eyelash Extensions**  
**Waxing**

Indulgence Packages available - call for more details

**GIFT TOKENS AVAILABLE**

**OPEN FROM 10 AM MONDAY TO SATURDAY**  
**01255 818 039**

  **309 HOLLAND ROAD,**  
**HOLLAND ON SEA CO15 6PD**

## KEEPING INFORMED

If you are on email and would like to receive information on events and  
activities in Holland or if you are holding an event (non political) and you  
would like it publicised via email please drop a note to

[tonyrulten@yahoo.co.uk](mailto:tonyrulten@yahoo.co.uk)



## **BFCC GARAGE DOORS**

SUPPLIED • INSTALLED • AUTOMATED • REPAIRED

**FREE**  
SURVEY &  
QUOTATION



### **3 good reasons...** for choosing **BFCC**

- 1** *Quality range of doors from leading manufacturers*
- 2** *First Class service for all budgets and tastes*
- 3** *Unrivalled, knowledgeable and friendly personal service*

BFCC supply and install garage doors in and around the Essex and Suffolk regions, located in Thorpe-le-Soken within the heart of the beautiful Essex countryside.

We offer a free of charge survey and quotation service so why not give us a call today or pop into our local showroom where you can view a variety of operational doors in various styles.

**Call: 01255 863815**

email: [sales@bfcc-garagedoors.co.uk](mailto:sales@bfcc-garagedoors.co.uk)

[www.bfcc-garagedoors.co.uk](http://www.bfcc-garagedoors.co.uk)





## JOHN'S AERIALS & SATELLITES

**No Call Out Charge  
Freeview - Sky - Freesat  
Installations & Repairs**

**01255 476209 or 07761 355569**

# HM

**HOLLAND-ON-SEA MOTORS**

*Three generations of excellence*



**CITROËN**

UP TO 40 QUALITY USED VEHICLES IN STOCK  
LARGE INDOOR SHOWROOM  
LOW RATE FINANCE AVAILABLE  
SERVICING, REPAIRS, MOT MOST MAKES/MODELS  
CITROEN AUTHORISED REPAIRER

TELEPHONE 01255 812205

EMAIL [dave@hollandonseamotors.co.uk](mailto:dave@hollandonseamotors.co.uk)

67 FRINTON ROAD HOLLAND ON SEA ESSEX CO15 5UH



**CITROËN**



**CLACTON & HOLLAND  
BEACH HUT ASSOCIATION**  
[www.clactonbeachhut.org](http://www.clactonbeachhut.org)

Chair Heather Davis 01255 814799  
Treasurer Ray Lafferty 01255 487276  
Damage Control 07931 082586 (new number)



**SELECT AUTO CENTRE**

**FREE COLLECTION &  
DELIVERY SERVICE**

All makes servicing - MOT testing - Brakes  
Exhausts - Clutches - Steering - Suspension  
14-16 Agate Road, Clacton-on-Sea CO15 1RA  
**Tel: 01255 424309**  
[www.select-autocentre.co.uk](http://www.select-autocentre.co.uk)

**THE GOLDEN FILLET**

Family owned Restaurant and  
Takeaway Service.  
Fully sustainable line caught cod and  
haddock  
**OPEN 7 DAYS A WEEK**  
Mon - Thurs 11.30 to 2.30 and 4.30 to  
8.30 - Friday to 9pm  
Saturday 11.30 to 8.30  
Sunday to 12 - 6pm  
110 Frinton Road, Holland-on-Sea  
Telephone Order to 01255 812363

**WASHING  
MACHINE  
REPAIRS**



- 20 years' experience
- No call-out charge
- Domestic appliance repairs
- All work guaranteed
- FREE local estimates

Holland-on-Sea  
ALL AREAS COVERED  
**Roger Neil**  
(1255) 814931

  
**RLH  
CONSTRUCTION**  
PROFESSIONAL PROPERTY RENOVATIONS

At RLH construction we specialise in property renovation. so if  
its a full renovation you are looking for or you just want to  
modernise an area of your home, RLH strives to deliver a  
professional and quality service, everytime.

- Bricklaying
- Carpentry
- Kitchens & Bathrooms
- Sofits, Facias & Guttering
- UPVC Windows & Doors
- Landscaping (Hard & Soft)
- Tiling
- Maintenance & Repairs

**Tel: 01255 719440 Mob: 07934982117**  
**Email: [rlhessexltd@gmail.com](mailto:rlhessexltd@gmail.com)**

Competative Prices. Fully Insured.  
Call us today for a free Quote.

[www.iFix-yourPC.com](http://www.iFix-yourPC.com)

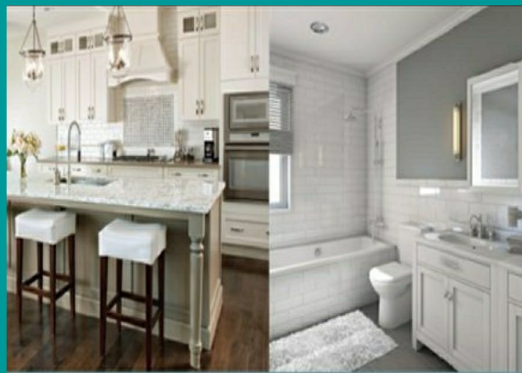
Do you require any PC/Laptop help/support ?  
Are you worried about the cost or being ripped off ?  
Most issues can be resolved within the first hour  
PC Support/Data Recovery/1-1 Training/at your HOME  
Call Stuart:

**07956 923824**



An old man told his grandson,  
"My son, there is a battle between  
two wolves inside us all."  
"One is Evil. It is anger, jealousy, greed,  
resentment, inferiority, lies and ego.  
The other is Good. It is joy, peace,  
love, hope, humility, kindness,  
empathy and truth."  
The boy thought about it,  
and asked,  
"Grandfather, which wolf wins?"  
The old man quietly replied,  
"The one you feed."





**JAMES HENDREY PLUMBING &  
HEATING**  
07935146840/01255 812813

Fully trained with over 20 years experience.  
In domestic /New build plumbing and heating.  
Lives in the Holland-on-Sea area, but covers all  
of Tendring.  
24 Hour call out within 35 miles radius.



**JAMES HENDREY PLUMBING &  
HEATING**  
Holland on Sea  
Tendring

24 Hour call out within 35 mile radius.  
Free no obligation quote  
Friendly with more than 20 years experience fully  
trained plumbing and heating engineer

*Call or message TODAY*

Facebook@James Hendrey Plumbing & Heating  
**07935146840**  
01255 812813





## Annade Care Ltd

With over 10 years experience in the care sector, we understand  
that the little things are the most important, yet can be the most  
overlooked.

**Some of the services we currently offer are;**

- Housekeeping Services
- Pet Care
- Respite Care
- Companionship
- Membership Services



Call us today for a chat with one of  
our team for more information on  
**01255 724 077**



**We offer a free market appraisal to run through every aspect of the moving process as required.**

**Our services include:**

- Accompanied viewing service
- Regular marketing updates
- London advertisements
- Marketing from hundreds of Estate agents around the UK including that all important London connection

This is but a small selection of our services, call **01255 222882** for further information, visit our website: **[www.omegaps.co.uk](http://www.omegaps.co.uk)** or email: **[info@omegaps.co.uk](mailto:info@omegaps.co.uk)**

**Visit your local office in Holland on Sea**

Monday to Friday 9 am until 5:00 pm  
Saturday 9 am until 4 pm

Clacton branch open 7 days a week  
8am to 7pm weekdays  
(Trading since 1995)



**Taking the stress  
out of moving**



### **GET CYCLING!** **Cycling Festival**

Thursday 22<sup>nd</sup> & Friday 23<sup>rd</sup> August  
(Clacton Air Show Days and  
Holland on Sea Scarecrow Festival Days)

at Eastcliff Recreation Ground

Bring your bike to view all  
the aircraft and events  
Obtain a Scarecrow Festival map  
and cycle to see all the scarecrows;  
joining in the HRA Cycle Rally Quiz on the way.

Visit the Sustrans display  
Free bike check ups  
Free Security Bike Post Coding

Penny Farthing demo  
Electric Bicycle demo

Unicycles

Cycle along the National Cycle Route 150  
(running between Walton, Frinton, Holland on Sea, Clacton and Jaywick)



### **WHY NOT JOIN US ?**

We do hope that you enjoy reading our magazine, we enjoy preparing it and ensuring that everyone is kept as up to date as possible. However, there is a cost involved for both printing and delivery and in order to continue to produce this magazine we need to ensure that as many folk as possible support our Association. We ask, if you have not already done so, to pay your annual membership fee using the form on page 33 and taking it to Kings Avenue Post Office



**FORTHCOMING EVENTS AT THE PUBLIC HALL  
IN FRINTON ROAD  
ORGANISED BY THE  
HOLLAND COMMUNITY ASSOCIATION**

H.C.A. Sequence Dance nights 20th September.  
Our Summer Fete is 20th July . Tables £10 both inside and out in the grounds.

Call Barbara 220 309 to book table.  
Fuchsia Society having their Big Show 26th and 27th July.

40 different clubs and groups use our Hall...from Art to Zumba. Also we have a Snooker room and Darts room available. See posters in both entrance Halls

There are books and clothes for sale in the entrance hall raising money for future projects

For all of the above, please check posters and caretakers for details.  
P.S. any unwanted paperbacks, bring to the hall, proceeds towards future projects.



**Harwich Sing  
TENDRING VOICES  
Community Choir  
THURSDAYS**

**HS TV KIDS: 5.15-6.30PM**  
**HS TV ADULTS: 7.00-9.00PM**

**PLOUGH CORNER COMMUNITY HALL.  
HARWICH ROAD, LITTLE CLACTON CO16 9ND**



**CALL CLARE 07554 423613  
OR FIND HARWICH SING ON FACEBOOK**

## **My Care Choices**

This is a secure digital register on which people living with significant illness can record their preferences and priorities for future care.

We really want as many people in North East Essex as possible to know about this register and speak to their families and their GP about what is important to them.

This planning can include, but is not limited to, end of life care planning.

A copy of the My Care Choices register booklet can be found at [www.mycarechoices.online](http://www.mycarechoices.online) and each GP surgery has been sent hard copies.


**REPORTING CRIME** - Do you know somebody who is carrying out criminal activity but fear the consequences of being identified as the person who reported them? Tell Crimestoppers WHAT you know about any crime or criminal - not WHO you are and you could be eligible for a reward (paid anonymously). Crimestoppers never ask for your name or trace your call, and you won't need to provide a statement or go to Court. [www.crimestoppers-uk.org](http://www.crimestoppers-uk.org) / 0800 555 111

**ECM Community Messaging** – you can sign up by following the link – <https://www.essexcommunitymessaging.org>

**Dog Fouling**


Dog Fouling is on the increase; however I cannot remember the last time I saw a stray dog in Holland on Sea. From that it must be safe to assume that all this foul mess must be dumped on OUR pavements and verges whilst said dogs are on their mistresses or masters lead. In this age of mobile phone cameras and dash cams it might be time to film offenders and pass to the appropriate bodies... What would be the counter argument?

**Please clean up after your dog**



**Bag it and bin it**

Dog fouling is unpleasant for ALL and can spread disease. The vast majority of owners do clean up after their dogs, however those who don't risk a hefty fine. Dog bags CAN be put into black sacks and litter bins (as well as dog waste bins). Dog owners – you have NOT done YOUR job until the dog bag is in one of our area's bins or in your bin at home.



My face in the mirror isn't wrinkled or drawn;  
My house isn't dirty the cobwebs are gone.  
My garden looks lovely and so does my lawn;  
I think I might never put my glasses back on!

Anon

*The Journey Home*



“I learned how to belly dance today. I didn't have to do much.

Just gave it a shake and the darn thing started dancing on it's own.

startsat60.

## INDEX OF ADVERTISERS

<b>Appliances</b>		<b>Fish &amp; Chips</b>		<b>Plastering</b>	
Appliance Services	46	Golden Fillet	52	Mick Griggs	24
<b>Bakers</b>		<b>Funeral Directors</b>		<b>Plumbing</b>	
Windmill Bakery	52	R Gwinnell & Sons	30	Pride Care	36
<b>Bathrooms &amp; Kitchens</b>		<b>Florists</b>		<b>Plumbing &amp; Heating</b>	
MJF Home Improvements	47	Mansion House	39	James Hendrey	57
<b>Beauty</b>		<b>Garages &amp; Cars</b>		<b>Post Office &amp; Gen</b>	
Beaches	53	Holland Motors	55	<b>Stores</b>	
<b>Beds &amp; Chairs</b>		Select Autos	56	Kings Avenue	45
Electric Bed & Chair Co	51	<b>Garage Doors</b>		<b>Printers</b>	
<b>Butchers</b>		Ace	41	Dolphin Artwork	36
Chas Bower	29	Avenue	25	<b>Renovation</b>	
Frinton Road	44	BFCC	54	RLH Construction	56
<b>Cards and Crafts</b>		<b>Garden Work</b>		<b>Residential Home</b>	
Gifts	23	Mick Griggs	24	Ridgewell House	25
<b>Care Services</b>		Ray	52	<b>Restaurants</b>	
Ecure	34	<b>Gifts</b>		Grandma Lilly's	36
<b>Catering</b>		The Emporium	51	Vintage Tea Rooms	48
Home Meals	26	<b>Hairdressers &amp; Barbers</b>		The Golden Fillet	56
Tasteful Catering	44	Scizzor Sisters	44	<b>Roofing</b>	
<b>Chiropodist</b>		Masters & Misters	50	Above Roofing	44
Love your Feet	38	<b>Home Improvements</b>		Rubber Deck Roofing	44
Walking on Air	50	Paul Lawrence	52	<b>Solicitors</b>	
<b>Cleaning &amp; Gardening</b>		<b>Insurance</b>		Fisher Jones	29
C & D	53	Holland Insurance	52	<b>Swimming Pools</b>	
Marianne	57	<b>Landscaping</b>		SPS	30
<b>Clubs and Associations</b>		Angel Landscapes	44	<b>Theatre</b>	
Beach Hut Assoc	55	<b>Laundry</b>		Essex Theatre Club	60
Holland Art Society	24	Leighs Laundry	46	<b>Travel Advice</b>	
Public Hall	60	<b>Martial Arts</b>		Kate Travel Expert	56
129 Ladies Club	28	Choi Kwang Do	38	<b>Tree Services</b>	
York Road Bowls	41	<b>Mowers</b>		Paul Thomas	39
<b>Computer Repairs</b>		Holland Mowers	48	<b>Tuition</b>	
Nigel	36	<b>Name Plates etc</b>		Ace Tuition	25
iFix-yourPC	53	Unique Plasma Cutting	46	<b>TV Aerials</b>	
<b>Counselling</b>		<b>Newsagents</b>		John's Aerials	55
Ann Gardner	52	Kings Avenue PO	41	<b>Washing Machine</b>	
<b>Dance &amp; Exercise</b>		<b>Optician</b>		<b>Repairs</b>	
FitSteps	49	Adrian Buizer	46	Roger Neil	56
<b>Estate Agents</b>		<b>Painting &amp; Decorating</b>		<b>Will Writing</b>	
Omega	58	M & M	47	Brenda Russell	52
Stoneridge	27	<b>Pet Supplies</b>		<b>Windows</b>	
<b>Financial Advice</b>		Holland Pet & Garden	36	Window Doctor	40
Hurst	28	<b>Pharmacy</b>			
		Holland Pharmacy	36		

### **Holland Residents' Association Committee Members**

President:	Brian Thomasson
Chair, Public Relations, Magazine	Verity Coulthard
Secretary:	Tony Rulten
Treasurer:	Andy Dunnett
Trade & Commerce	Jill Rulten
Health & Well-Being	Rita Garnett
Planning	David Emmerson
Seafront and Open Spaces	Richard Walker
Highways and Transport	Jon Tilbury
Social Secretary	Mo Humphreys
Minute Secretary	Ray Humphreys

### **HOLLAND RESIDENTS' ASSOCIATION**

#### **QUARTERLY MEETING/EXTRAORDINARY GENERAL MEETING**

The next Quarterly Meeting will be held at 7pm on Thursday 25<sup>th</sup> July 2019 in the Public Hall, Frinton Road. Our guest speaker will be the local Member of Parliament Giles Watling. Please come along to hear what he has to say about the current state of politics nationally and locally and perhaps ask him a question on an issue causing you concern.

During this meeting we will have a short Extraordinary General Meeting. Those who attended the Annual General Meeting on 25<sup>th</sup> April 2019 will be aware that technical issues prevented us from displaying the Minutes of the 2018 AGM or the Audited Accounts for 2018/19. We now need to present these to an EGM for approval.

### **WHO TO CONTACT**

#### **MEMBER OF PARLIAMENT**

Giles Watling House of Commons, London, SW1A 0AA  
Tel: 0207 219 0795 Email: [giles.watling.mp@parliament.uk](mailto:giles.watling.mp@parliament.uk)

#### **ESSEX COUNTY COUNCILLOR**

Colin Sargeant 9 Windermere Road, Holland on Sea, CO15 5BZ  
Tel: 07541 321275 Email: [cllr.colin.sargeant@essex.gov.uk](mailto:cllr.colin.sargeant@essex.gov.uk)





Clergy and members of Holland's Churches wish you all a  
very Happy Summer and remind you that  
a warm welcome awaits you at all of our churches  
**St Barts - Frinton Road**

Sunday Mornings at St. Bart's  
8.00 - Book of Common Prayer Service  
10.00 - Sung Communion Service  
11.30 - HeartBeat, an all-age gathering with free lunch

**Ignite!** a youth club for 12-15 year olds meets every Wednesday during term time 7 pm at St. Paul's Church in Clacton (CO15 6AU) **St. Bart's Happy Singers** (informal singing group) is open to everyone every Wednesday at 7 pm. **Holland Hub** (social gathering) meets fortnightly on Thursdays from 2.00-4.00. **Bart's Bears** (toddler group) meets every Friday from 10.00-11.30.

**Coffee Morning** is every Saturday from 9.30-11.30.

WEBSITE [barts.org.uk](http://barts.org.uk)

## **Baptist Church - corner of Norman Road**

Sundays 10:30 **Worship Service** for ALL, there is also a **Children's Club** during the service.

Tuesdays 9:30 **Little Lambs**. Preschool children's play time with refreshments £1. during term times, Tuesdays 10:00 Come meet and **Pray**. Thursdays 12:30 **Lunch Club**- Home cooked 3 course lunch. £2.50 first three Thursdays every month, booking is necessary

14/7 focus on **Peru** come and build your knowledge about Peru and the work The Baptist mission is doing there with Laura Lee

16/7 Friendship Club 14:30-16:30 13/8 Friendship Club 14:30-16:30

14/9 Sat Messy Church . for ALL the family, crafts, activity's ,Fun, Food

27<sup>th</sup> September we are having a **Macmillan coffee evening** with a 60 70 80 concert by "The reunion" they are a fantastic band £5 Tickets 19:00

Facebook address - [www.facebook.com/hollandonseabaptistchurch](http://www.facebook.com/hollandonseabaptistchurch)

Any further details from HBC 01255 814617

website: [www.hollandonseabaptist.com](http://www.hollandonseabaptist.com)

## **Methodist Church—Kings Avenue**

You are assured of a Warm Welcome at all of our Services which start at 10.30am  
Coffee Mornings every Friday from 10.00am

14 July David Bavister, 21 July Reverend John Allison, Holy Communion, 28 July Anne Scott, 4 August Reverend Crawford Logan, Holy Communion,  
11 August Maddy Whittle, 18 August Gordon Doyle, 25 August Cafe Service  
Events - 29 June Tea at 'The Ritz', 20 July Tea - Holland's Got Talent